

FOR LEASE



FOR LEASE

HEALTH PARK AT WAKEFIELD

11081 Forest Pines Drive -- Raleigh, NC 27614



HEALTH PARK AT WAKEFIELD

11081 Forest Pines Drive -- Raleigh, NC 27614

PROPERTY TYPE	Medical Office
BUILDING SIZE	20,170 SF
LEASING RATE	\$19.00 /SF
TICAM	\$5.20 PSF
LEASE TYPE	NNN
YEAR BUILT	2002
COUNTY	Wake
LOCATION	Raleigh, NC
FLOORS	1



BRET MULLER
BMuller@CapitalAssociates.com
919.523.4200

WES JOHNSON
WJohnson@CapitalAssociates.com
919.422.4853



HEALTH PARK AT WAKEFIELD

11081 Forest Pines Drive -- Raleigh, NC 27614

ABOUT

The Health Park at Wakefield is a 20,000 SF single-story, high quality brick office building where suites can be designed for specific uses. Positioned within an extremely high traffic corridor, this building is located immediately adjacent to Rex Healthcare of Wakefield. Monument and building signage is available.

Walk Score®



49

CAR-DEPENDENT

Most errands require a car.



20

MINIMAL TRANSIT

It is possible to get on a bus.



32

SOMEWHAT BIKEABLE

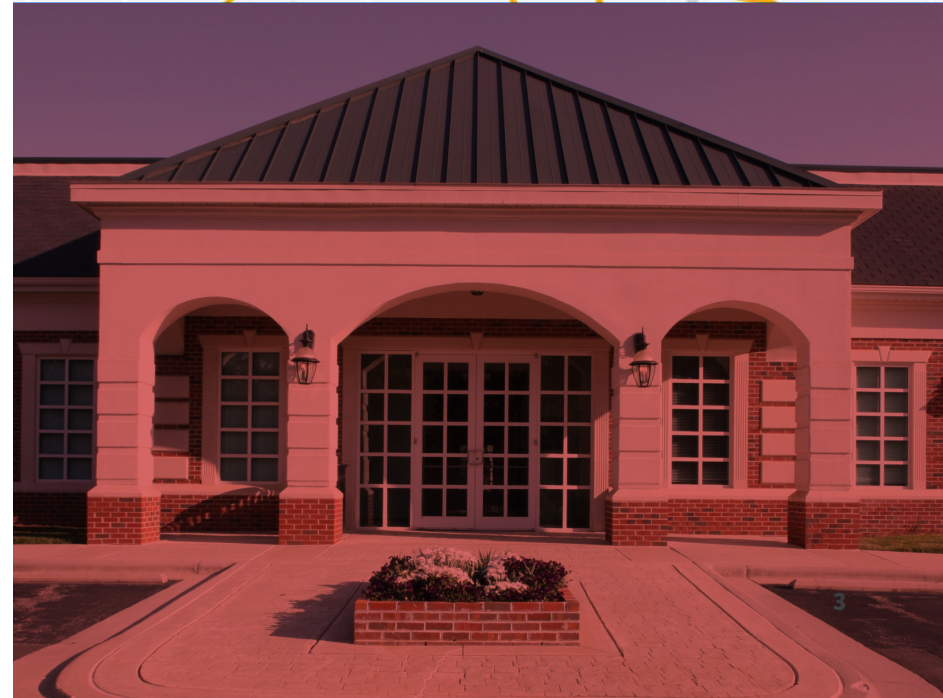
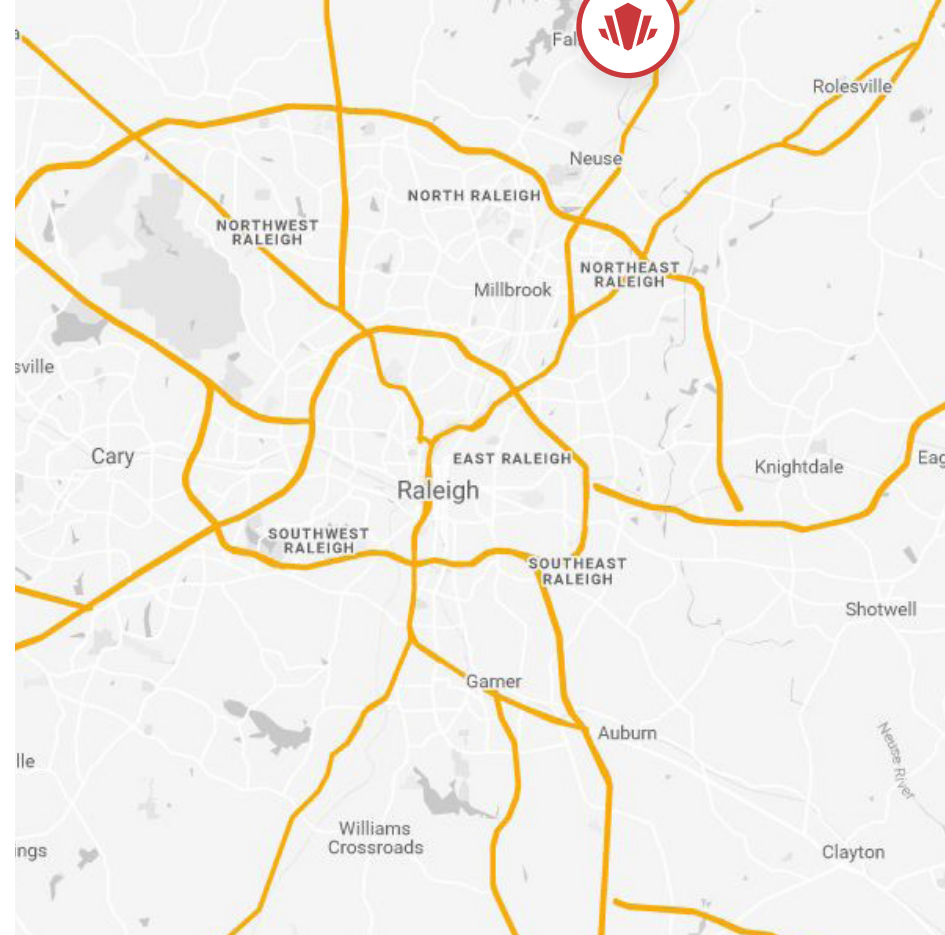
Biking is convenient for some trips.

BRET MULLER

BMuller@CapitalAssociates.com
919.523.4200

WES JOHNSON

WJohnson@CapitalAssociates.com
919.422.4853





Health Park at Wakefield



POINTS OF INTEREST

DINING

- Starbucks
- Jersey Mike's
- Golden Corral
- Mellow Mushroom

BANKING

- PNC Bank
- Wells Fargo
- Bank of America
- Coastal Federal Credit Union

CONVENIENCE

- UNC Rex Healthcare
- Harris Teeter

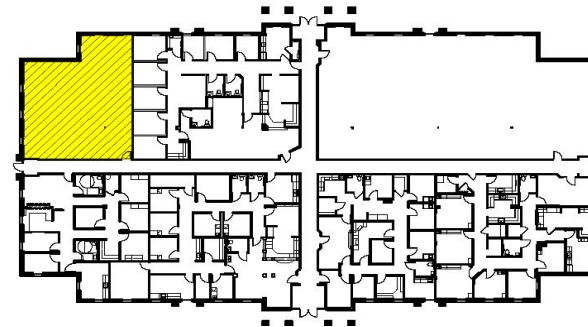
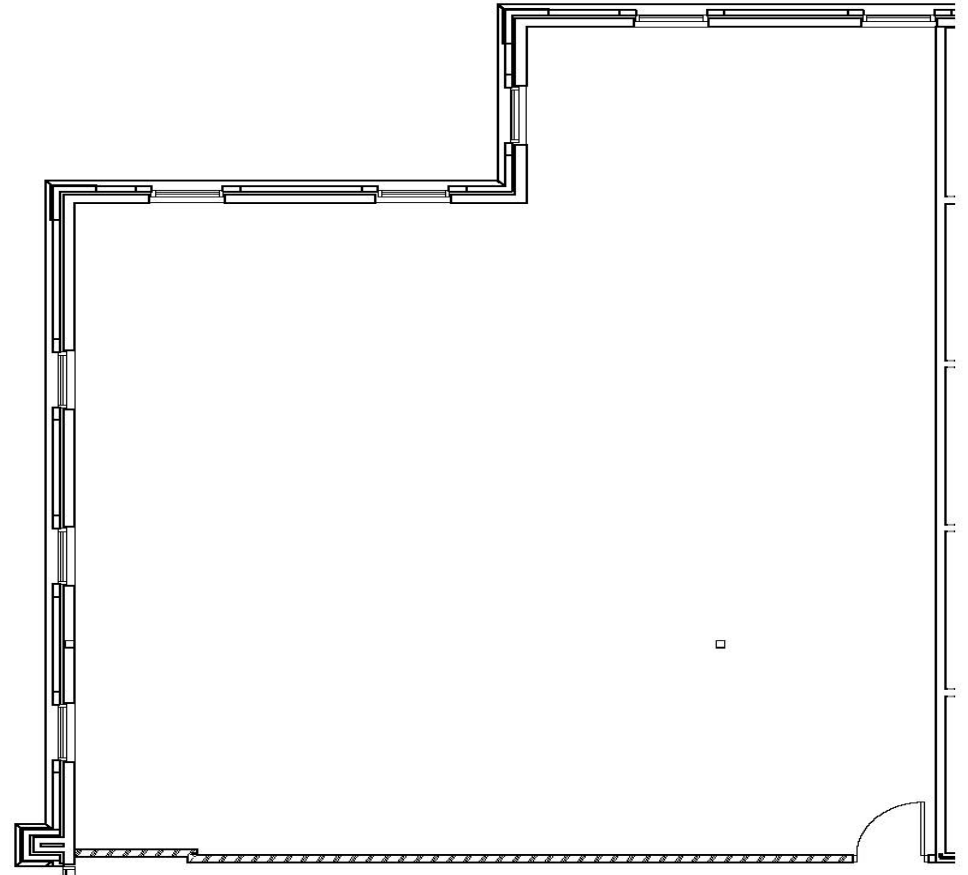
HEALTH PARK AT WAKEFIELD

11081 Forest Pines Drive -- Raleigh, NC 27614

AVAILABLE

1st Floor

**1,912 SF
SPACE IN SHELL CONDITION**



BRET MULLER

BMuller@CapitalAssociates.com
919.523.4200

WES JOHNSON

WJohnson@CapitalAssociates.com
919.422.4853

