

FOR LEASE



FOR LEASE
THE CRESCENT

115 Crescent Commons, Cary, NC 27518



**CAPITAL
ASSOCIATES®**

ABOUT

115 Crescent Commons is an 18,500 SF two-story, Class A orchard stone, EFIS, and glass office building featuring a stone and standing seam metal roof which creates a distinct statement along the heavily traveled Kildaire Farm Road. Approximately 4,000 SF has been designed and approved for retail use with Kildaire Farm Road frontage. Five generous parking spaces are available per 1,000 SF for tenant use.

The Crescent buildings are located within the highly appealing and successful Crescent multi-use business park in Cary. South of Tryon Road and nestled between Kildaire Farm Road and Regency Parkway, the Crescent community offers shopping, banking, hotels, restaurants, a lifetime fitness facility, and a range of housing options all within a one-mile radius. Easy access to WakeMed Cary Hospital and US Highways 1 and 64 connecting within minutes to Interstates 40, 440, and 540.

Walk Score®

-  **60** **SOMEWHAT WALKABLE**
Some errands can be accomplished on foot.
-  **27** **SOME TRANSIT**
A few public nearby transportation options.
-  **44** **SOMEWHAT BIKEABLE**
Biking is somewhat convenient for most trips.

THE CRESCENT

115 Crescent Commons, Cary, NC 27518

PROPERTY TYPE	Office
BUILDING SIZE	18,500 SF
LEASING RATE	\$30.95/SF
YEAR BUILT	2003
COUNTY	Wake
LOCATION	Cary, NC
FLOORS	2



BRET MULLER
BMuller@CapitalAssociates.com
919.523.4200

WES JOHNSON
WJohnson@CapitalAssociates.com
919.422.4853



**CAPITAL
ASSOCIATES.**

THE CRESCENT

115 Crescent Commons, Cary, NC 27518

LOCATION

115 Crescent Commons is located in the highly appealing and successful Crescent multi-use business park. Visibility along Kildaire Farm Road and the adjacent Harris Teeter shopping center create a unique setting, WakeMed Cary Hospital, high-income homes, hotels, restaurants, and significant office users all within a one-mile radius make this a dynamic office and/or retail site.

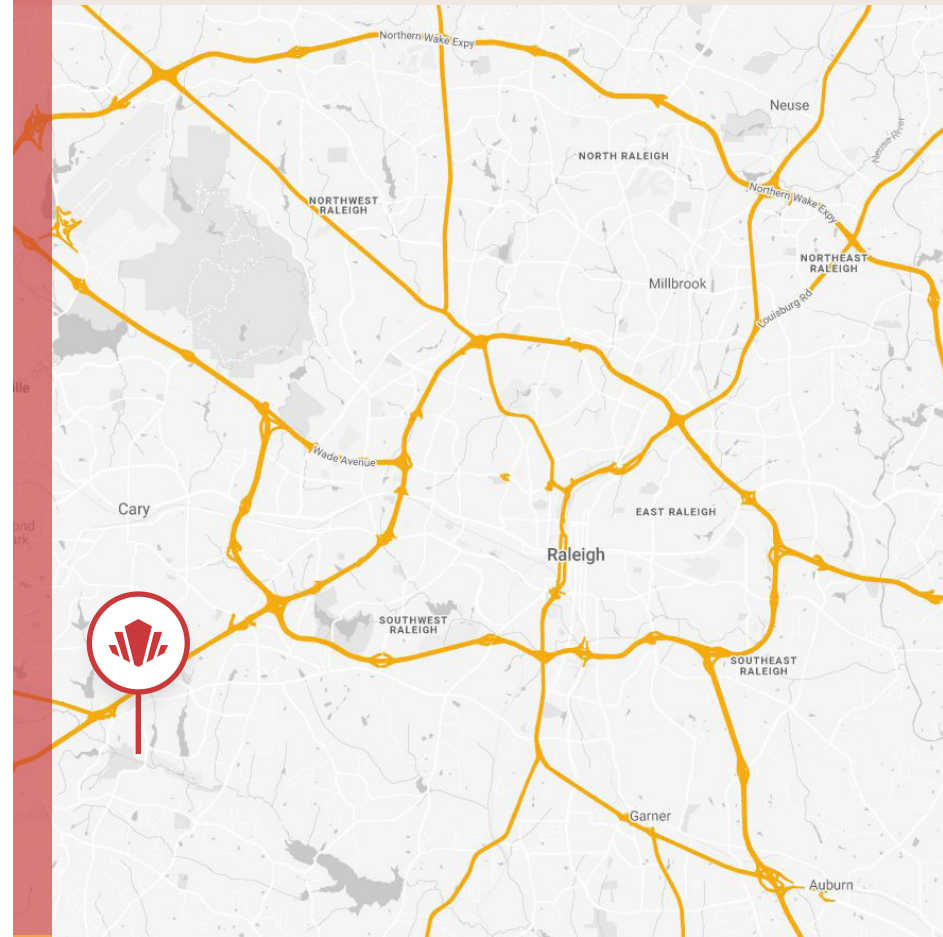


BRET MULLER

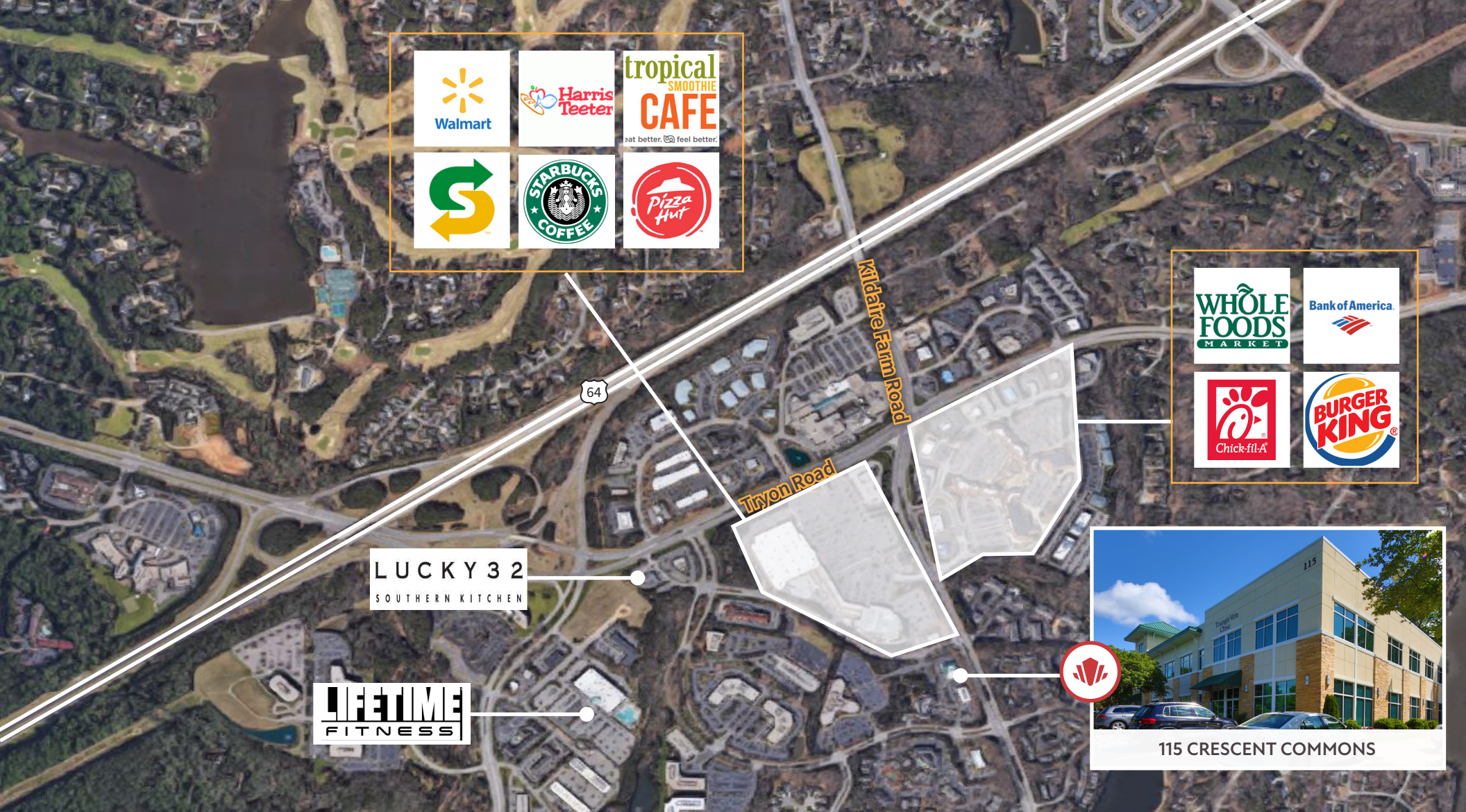
BMuller@CapitalAssociates.com
919.523.4200

WES JOHNSON

WJohnson@CapitalAssociates.com
919.422.4853



CONVENIENT LOCATION



POINTS OF INTEREST

DINING

- Chick-Fil-A
- Whole Foods
- Burger King
- Subway
- New York Bagel & Deli
- Lucky 32 Southern Kitchen
- Pizza Hut
- Starbucks

CONVENIENCE

- Lifetime Fitness
- Harris Teeter
- Wal- Mart
- Walgreens

BANKING

- Bank of America
- Wells Fargo
- PNC Bank



115

Triangle Vein Clinic 200 →
Avance Primary Care 100 ←
Lake Pine Oral & Facial Surgery 150 →
James W. Jacobs, MD 250 →
Martin van Cleeff, MD 250 →

115 CRESCENT COMMONS

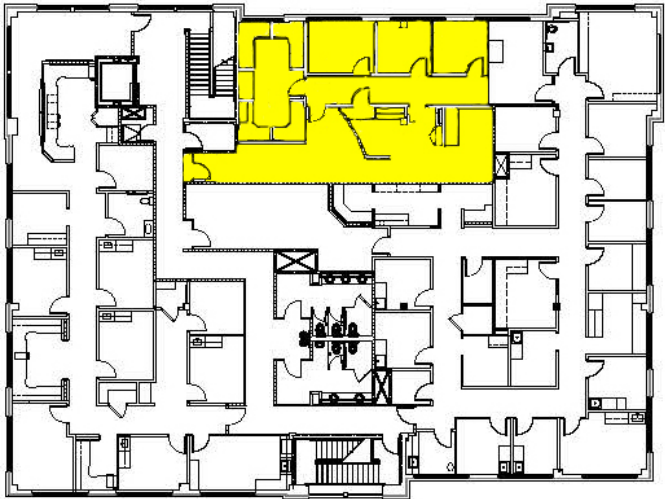
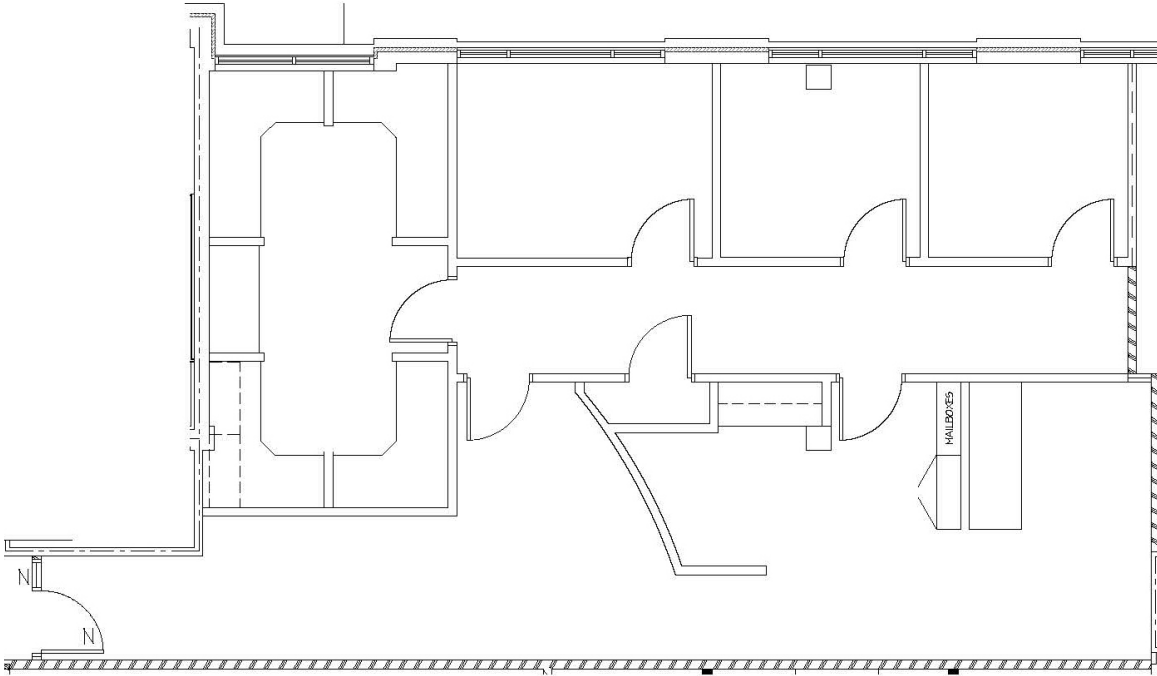
Ample directional signage and generous parking.

THE CRESCENT

115 Crescent Commons, Cary, NC 27518

2nd Floor

1,633 SF



BRET MULLER
BMuller@CapitalAssociates.com
919.523.4200

WES JOHNSON
WJohnson@CapitalAssociates.com
919.422.4853

