

FOR LEASE



500 GREGSON DRIVE
Cary, NC 27511



**CAPITAL
ASSOCIATES.**

500 GREGSON DRIVE

Cary, NC 27511

PROPERTY TYPE	Office
BUILDING SIZE	108,000 SF
LEASE TYPE	NNN
YEAR BUILT	1988
COUNTY	Wake
LOCATION	Cary, NC
FLOORS	1



TRIPP BRADSHAW

919.749.0004 (c)

919.233.9901 (o)

tbradshaw@capitalassociates.com

capitalassociates.com

500 GREGSON DRIVE

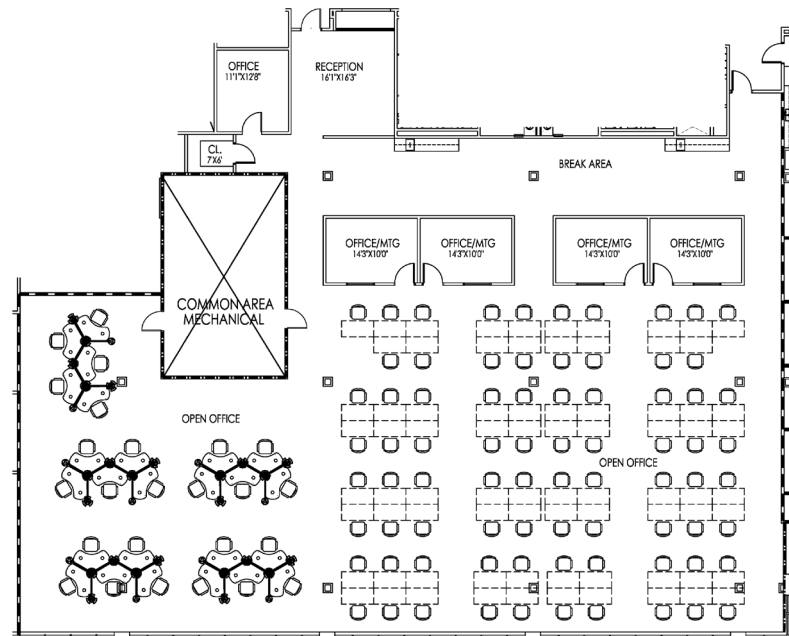
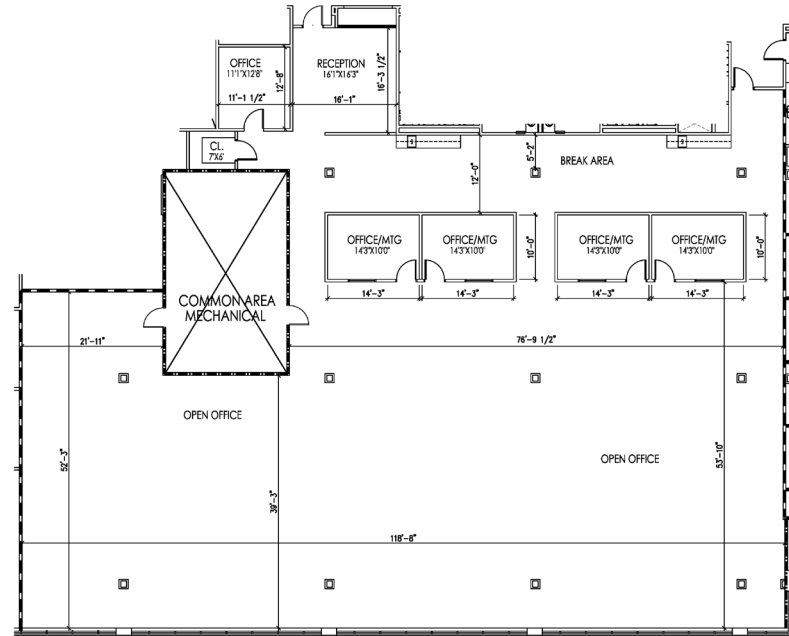
Cary, NC 27511

AVAILABLE
2nd Quarter 2025

First Floor
Suite 170

9,963 SF Subdividable

Ideal space for training, engineering, network operations, call center, etc.



TRIPP BRADSHAW

919.749.0004 (c)

919.233.9901 (o)

tbradshaw@capitalassociates.com

capitalassociates.com

500 GREGSON DRIVE

Cary, NC 27511

ABOUT

500 Gregson is a 108,000 SF single-story, office building located on a beautiful 33-acre site in pine-shaded MacGregor Park. Excellent call center or data center space with parking for 1,200 cars. Park amenities include numerous hotels, restaurants, banks and day care centers.

This high-tech building has dual-feed power from two different primary feeders and multiple SONET rings to maximize telephone and data transmission speed and capacity. Additional land is available for build-to-suit options.



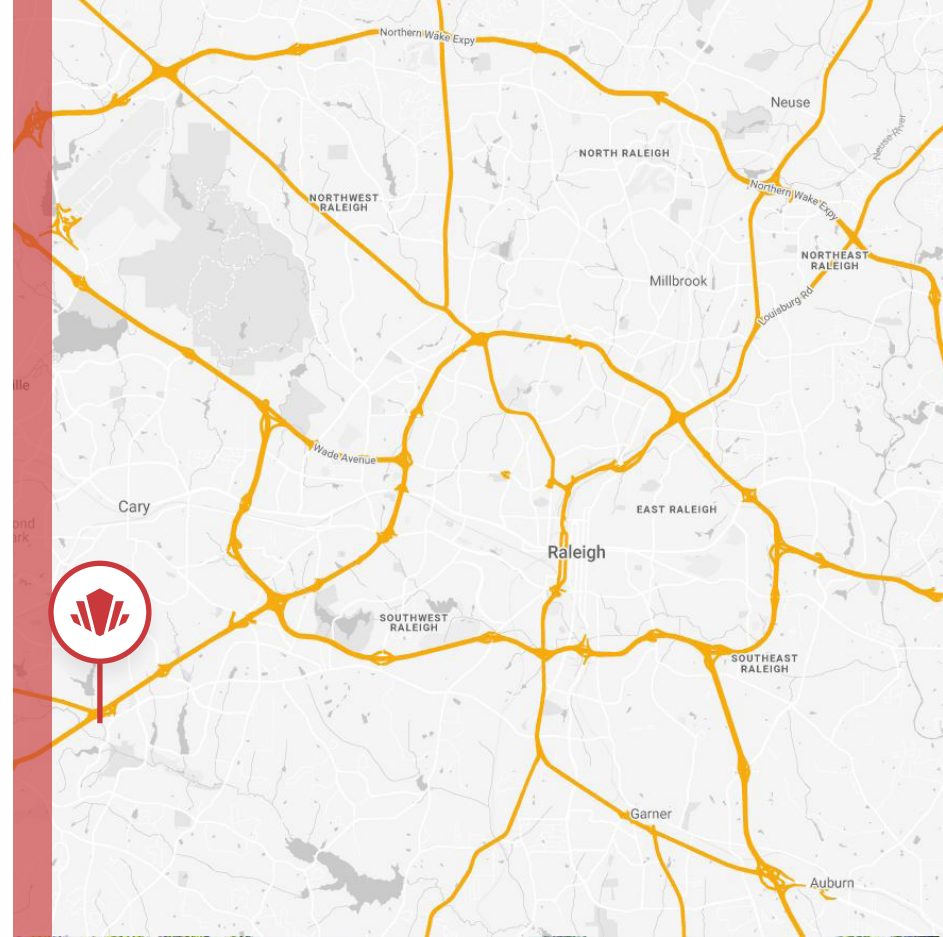
TRIPP BRADSHAW

919.749.0004 (c)

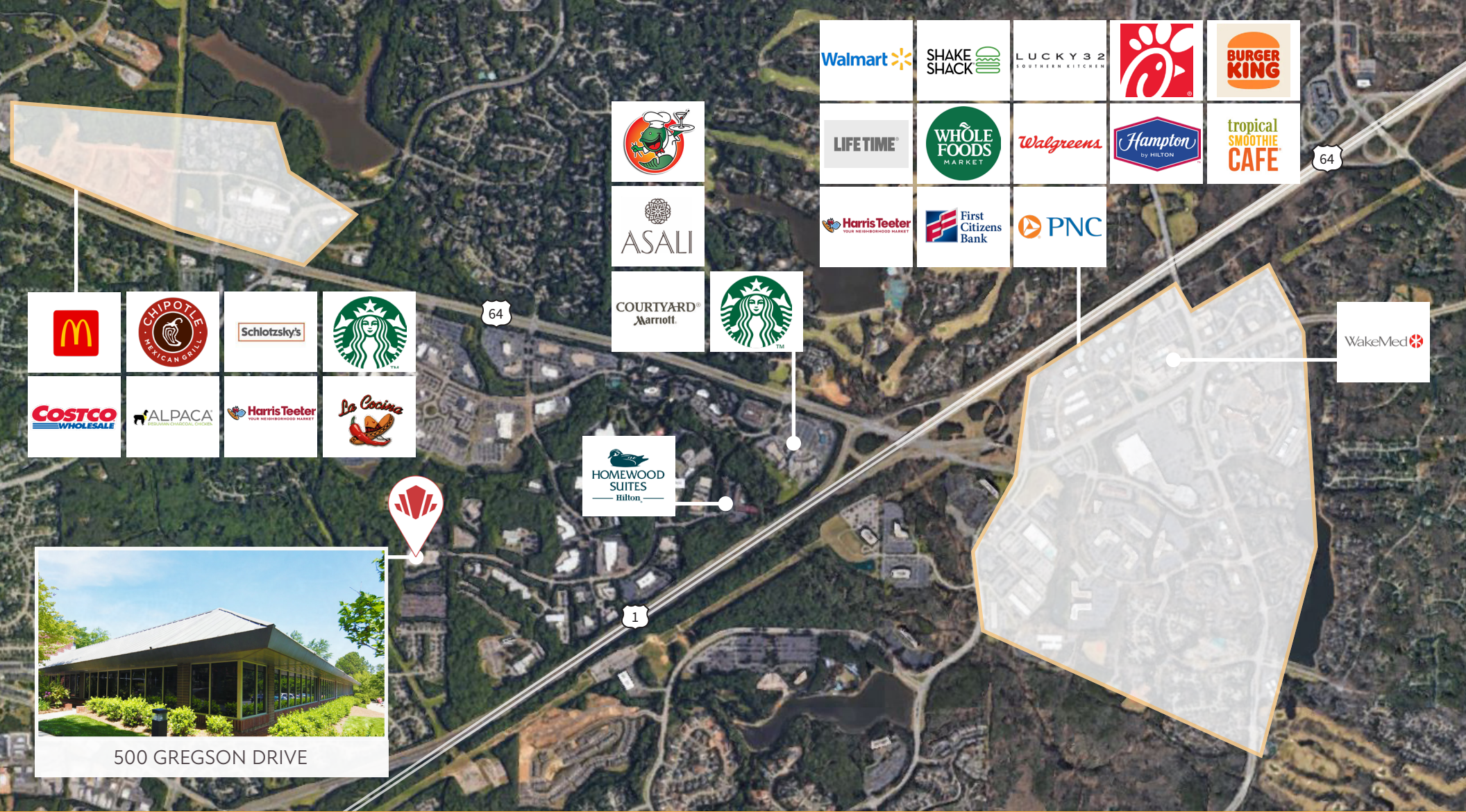
919.233.9901 (o)

tbradshaw@capitalassociates.com

capitalassociates.com



COMFORTABLE CAMPUS
SETTING



POINTS OF INTEREST

DINING

- Wasabi Sushi & Thai
- Taziki's Mediterranean Cafe
- Starbucks
- Chicken Salad Chick
- Chick Fil-A
- Famous Taosterty

CONVENIENCE

- Lifetime
- Harris Teeter
- Walmart
- Costco
- Whole Foods

HOTELS

- Walgreens
- First Citizens Bank
- Bank of America
- Wake Med Cary Hospital
Emergency Room
- Homewood Suites by Hilton
- Residence Inn, Marriott
- La Quinta
- Comfort Suites Regency Park
- Courtyard by Marriott

