

FOR LEASE

COMING AVAILABLE 1/1/2027

2nd Generation Wet Lab Suites



BIOMEDICAL PARTNERSHIP CENTER

1001 William Moore Drive | Raleigh, NC 27607



**CAPITAL
ASSOCIATES®**

BIOMEDICAL PARTNERSHIP CENTER AT NCSU

The Biomedical Partnership Center is a 44,500 SF two-story, brick and glass building with approximately 21,264 SF of Class A second generation wet lab/office space available. Easy access from Interstates 40 and 440, Highway 54, and RDU International Airport. Located at the corner of Blue Ridge Road and Hillsborough Street, this building occupies a portion of North Carolina State University's 250-acre Centennial Biomedical Campus, home of one of the top-ranked veterinary schools in the nation. Tenants enjoy special affiliate privileges with NC State.



BRET MULLER
919.523.4200
bmuller@capitalassociates.com

WES JOHNSON
919.422.4853
wjohnson@capitalassociates.com

BIOMEDICAL PARTNERSHIP CENTER

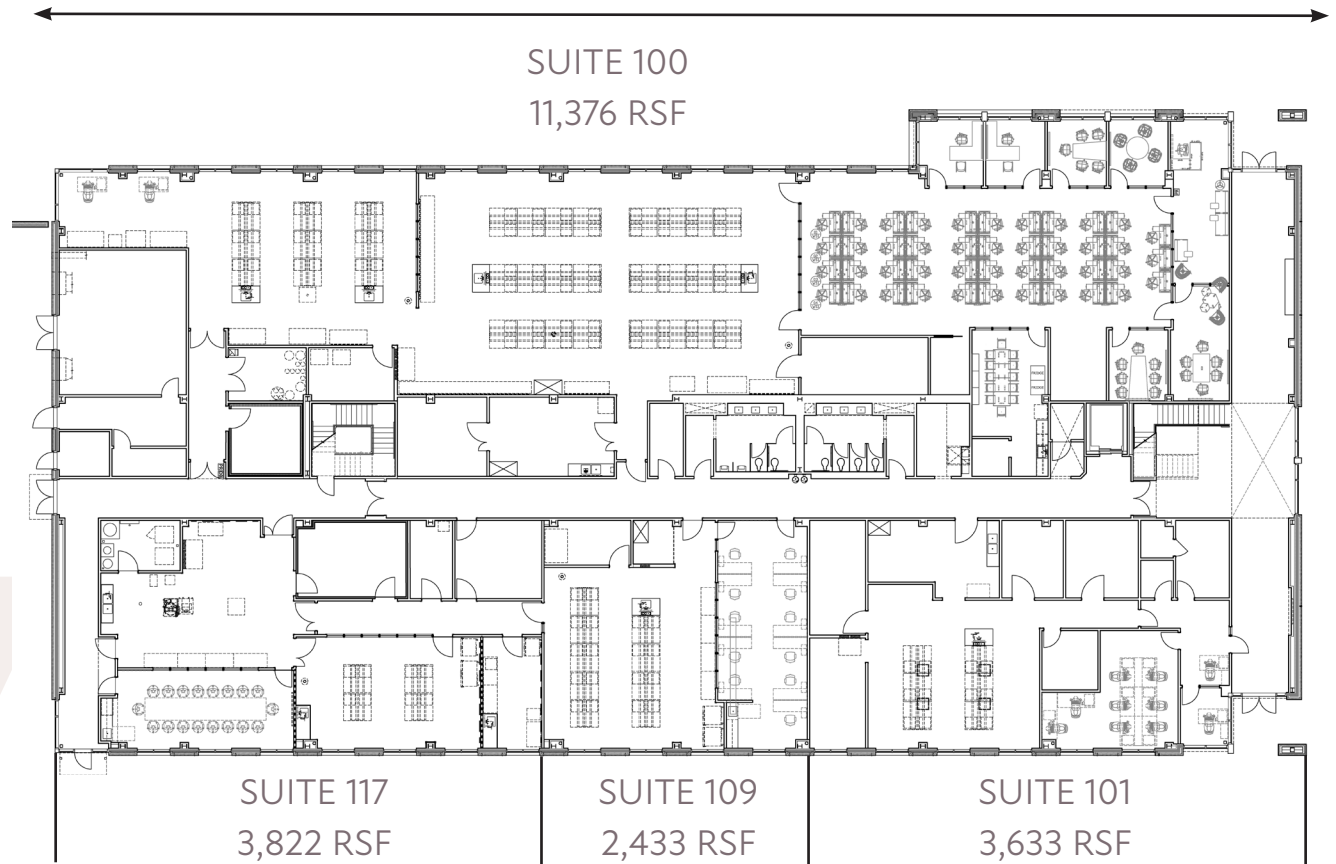
1001 William Moore Dr | Raleigh, NC 27607

AVAILABLE

First Floor

21,264 SF

All 4 suites available together or separately



BRET MULLER

919.523.4200

bmuller@capitalassociates.com

WES JOHNSON

919.422.4853

wjohnson@capitalassociates.com



BIOMEDICAL PARTNERSHIP CENTER

1001 William Moore Drive, Raleigh, NC 27607

PROPERTY TYPE	BSL2 Wet Lab/Office
BUILDING SIZE	44,500 SF
LEASING RATE	\$48.00/SF
TICAM	\$18.34/SF
LEASING TYPE	NNN
YEAR BUILT	2017
COUNTY	Wake
LOCATION	Raleigh, NC
FLOORS	2



BRET MULLER
919.523.4200
bmuller@capitalassociates.com

WES JOHNSON
919.422.4853
wjohnson@capitalassociates.com



BIOMEDICAL PARTNERSHIP CENTER

1001 William Moore Dr | Raleigh, NC 27607

OPPORTUNITIES FOR ACCESS TO WORLD-CLASS RESEARCH AND ACADEMIC UNITS

- Convenient to I-40 and RDU International Airport.
- Ongoing research and collaborative opportunities with more than 85 departments and institutes.
- Leaders in: Biological Barriers; Comparative Genetics; Regenerative Medicine; Neurobiology; and Infectious Diseases.
- Direct access to undergraduate and graduate student population.
- Access to state-of-the-art laboratories, equipment, instrumentation and analytics.
- Ground breaking animal, human health and biomedical research.
- Part of Centennial Campus, a proven national model for public-private research campuses.
- Ongoing partnership and liaison services with the Centennial Campus Partnership Office, and with numerous corporate and governmental partners.
- NC State has a student enrollment of approximately 40,000 with over 2,464 faculty members.
- Part of the greater Triangle academic environment, including major research universities UNC-Chapel Hill and Duke University.



BRET MULLER

919.523.4200

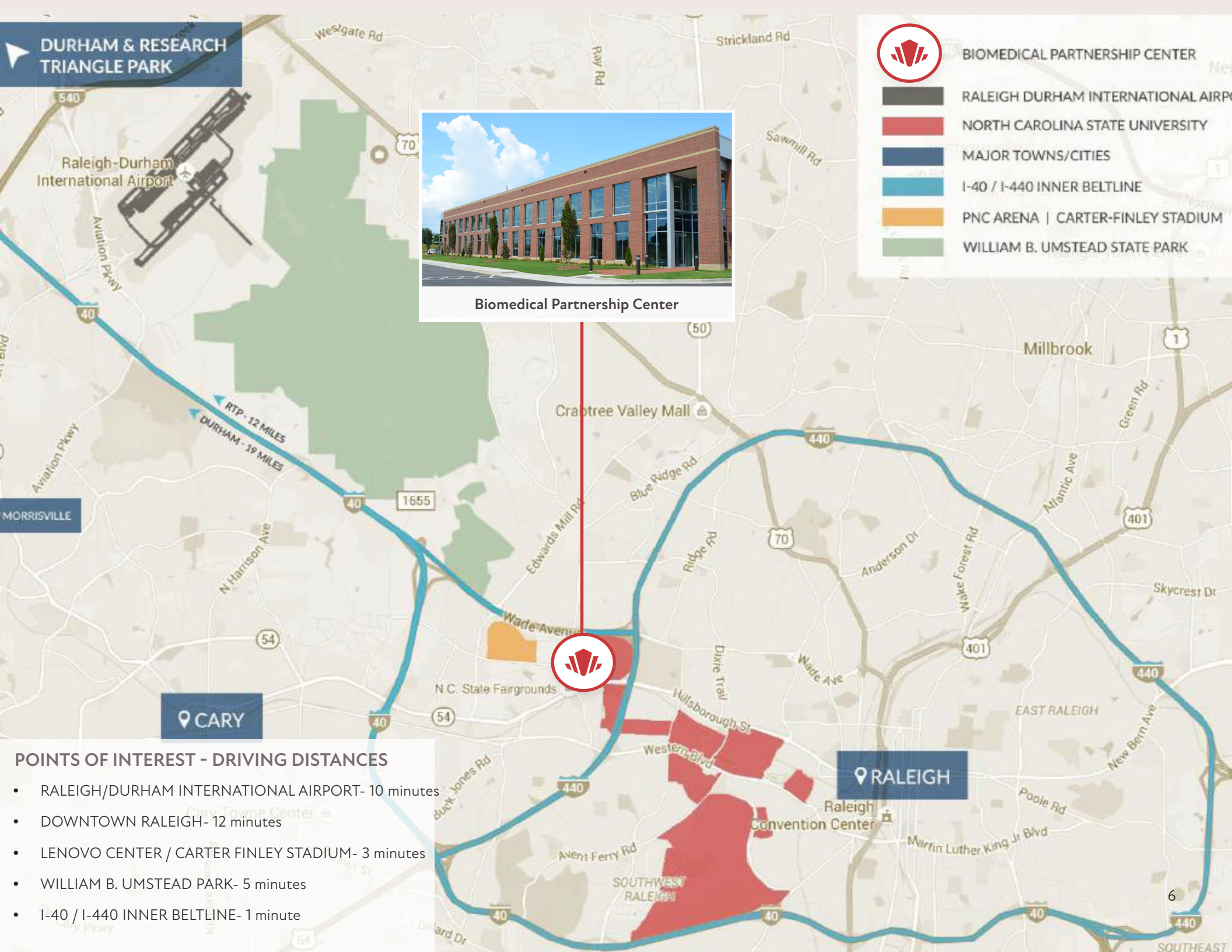
bmuller@capitalassociates.com

WES JOHNSON

919.422.4853

wjohnson@capitalassociates.com





DURHAM & RESEARCH TRIANGLE PARK



-  BIOMEDICAL PARTNERSHIP CENTER
-  RALEIGH DURHAM INTERNATIONAL AIRPORT
-  NORTH CAROLINA STATE UNIVERSITY
-  MAJOR TOWNS/CITIES
-  I-40 / I-440 INNER BELTLINE
-  PNC ARENA | CARTER-FINLEY STADIUM
-  WILLIAM B. UMSTEAD STATE PARK



Biomedical Partnership Center

RTP - 12 MILES
 DURHAM - 19 MILES

POINTS OF INTEREST - DRIVING DISTANCES

- RALEIGH/DURHAM INTERNATIONAL AIRPORT- 10 minutes
- DOWNTOWN RALEIGH- 12 minutes
- LENOVO CENTER / CARTER FINLEY STADIUM- 3 minutes
- WILLIAM B. UMSTEAD PARK- 5 minutes
- I-40 / I-440 INNER BELTLINE- 1 minute

RALEIGH



Wade Avenue

Blue Ridge Road

Biomedical Partnership Center @ NCSU

Hillsborough Street

Blue Ridge Road

NCSU College of Vet. Med.

CVM

CVM

CVM

NCSU Faculty Club

I-440

MEREDITH COLLEGE

Biomedical Partnership Center

- Yellow square = Biomedical Partnership Ctr.
- Brown square = Proposed
- Dark brown square = Existing

BUILDING INFRASTRUCTURE

Mechanical

- Lab space HVAC is via central air handling units with chilled water cooling. Systems provide outside air to lab spaces at a rate of 10 air changes per hour. All systems are variable air volume delivery.
- Numerous hoods, ductwork, and controls exist throughout the suites (various size ranges).
- Mechanical equipment on each floor is fed from a 600 Amp, 277/480 Volt panel on each floor.
- Existing 350kW diesel generator handles all life safety and tenant emergency stand-by loads. Capacity for tenant loads is 271 kW.

General

- Various suites have space humidification systems, bio safety cabinets, De-ionized water systems, specialty filtration systems and infrastructure, compressed air systems, biohazard waste disposal systems, and steam systems.



BRET MULLER
919.523.4200
bmuller@capitalassociates.com

WES JOHNSON
919.422.4853
wjohnson@capitalassociates.com



AMENITIES AND SPECIAL AFFILIATE PRIVILEGES AT NC STATE UNIVERSITY

- Access to NC State libraries, gym, pool, and shared conference space.
- Memberships available in the State Club and the neighboring University Club.
- Executive conference center and hotel (coming soon).
- Scheduled campus-wide programs for employees, such as the Lunch and Learn series, Focus on Fitness activities, Executive Breakfast Club, and Health Works! program.
- Free bus transportation around campus and throughout the Triangle.
- 18-hole championship golf course.
- 75-acre lake with fishing pier and non-motorized boat launch.
- Multi-purpose walking paths throughout campus.
- Discounts to athletic, cultural, and arts events and the McKimmon Continuing Education Center.
- And much more! **For a complete list visit, <https://centennial.ncsu.edu/partner-portal/privileges.php>.**

BRET MULLER
919.523.4200
bmuller@capitalassociates.com

WES JOHNSON
919.422.4853
wjohnson@capitalassociates.com





Building infrastructure existing for BSL2 designation in lab spaces.





Efficient common areas with independent tenant suites.

