

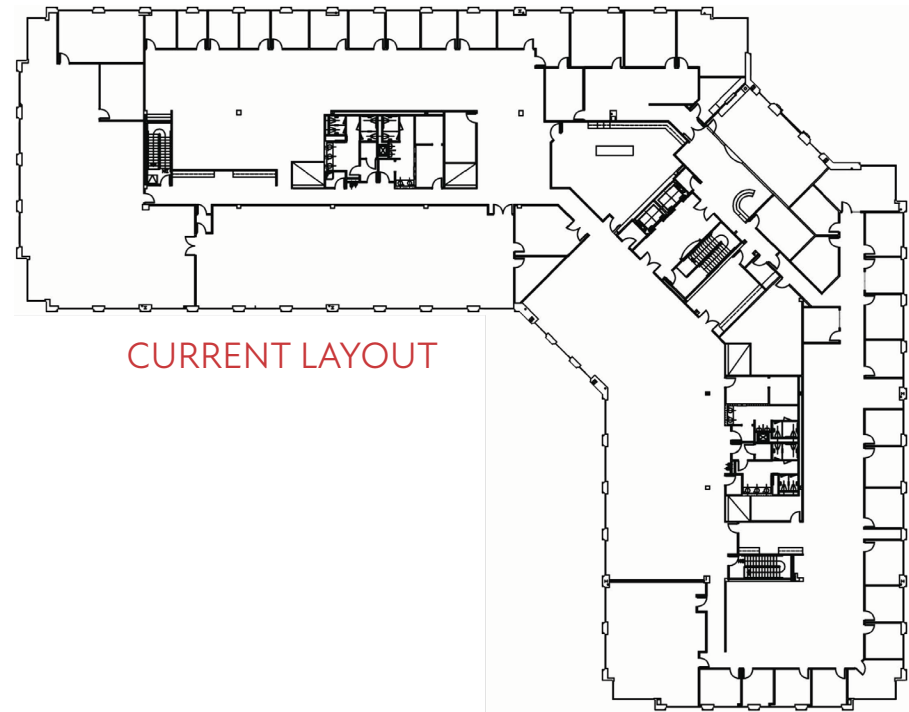
# CRESCENT LAKESIDE I

1225 Crescent Green | Cary, NC 27518

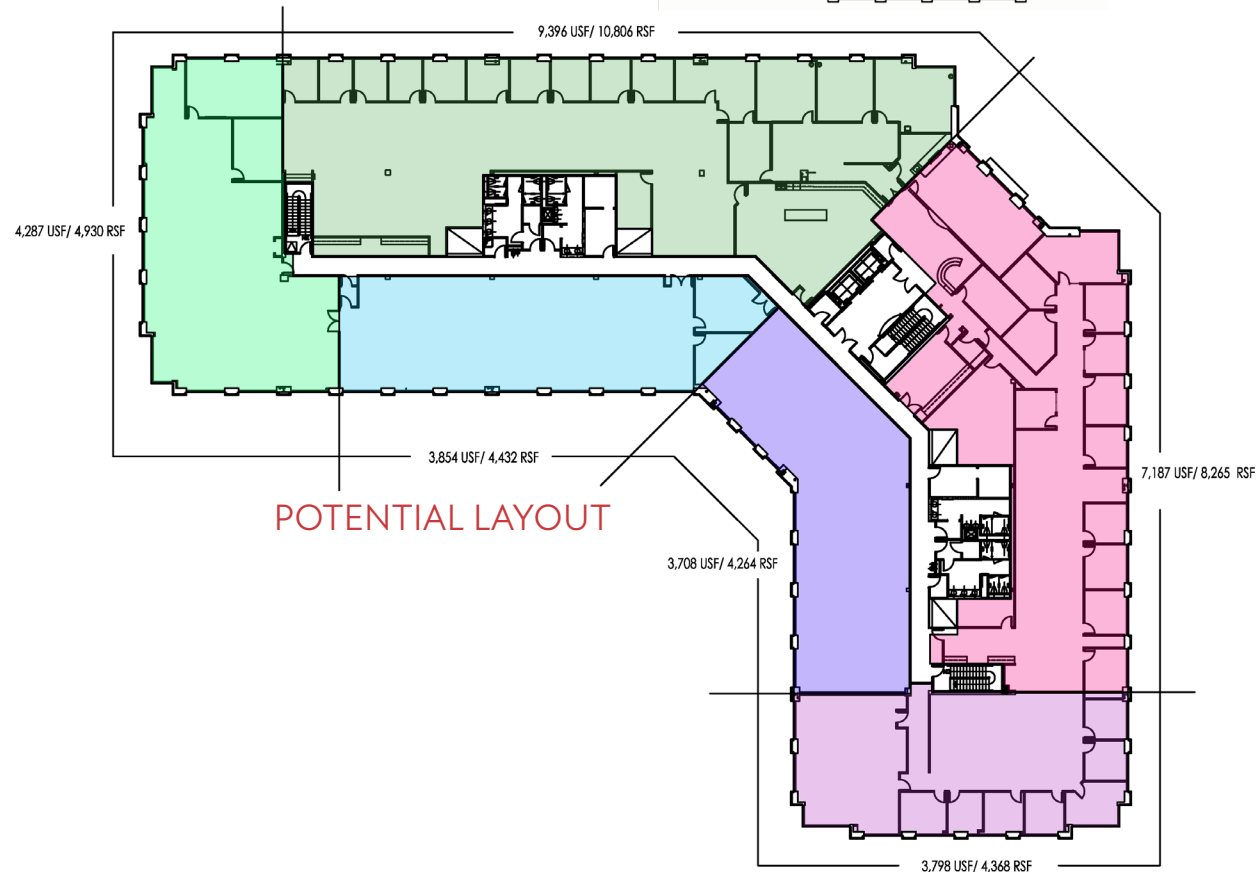
**AVAILABLE**  
1st Quarter, 2024

Entire Third Floor  
Suite 300

4,264 SF - 37,065 SF  
Subdividable



CURRENT LAYOUT



POTENTIAL LAYOUT

**BRET MULLER**

[bmuller@capitalassociates.com](mailto:bmuller@capitalassociates.com)  
919.523.4200

**WES JOHNSON**

[wjohnson@capitalassociates.com](mailto:wjohnson@capitalassociates.com)  
919.422.4853

