



FOR LEASE

# RENAISSANCE PLAZA

230 North Elm Street  
Greensboro, NC 27401



CAPITAL  
ASSOCIATES®

# RENAISSANCE PLAZA

230 North Elm Street | Greensboro, NC 27401

PROPERTY TYPE	Office
BUILDING SIZE	287,464 SF
LEASING RATE	\$28.50 - \$33.00/SF
YEAR BUILT	1989
COUNTY	Guilford
LOCATION	Greensboro, NC
FLOORS	19



**STEVE TURNER**  
sturner@capitalassociates.com  
336.333.2288  
capitalassociates.com

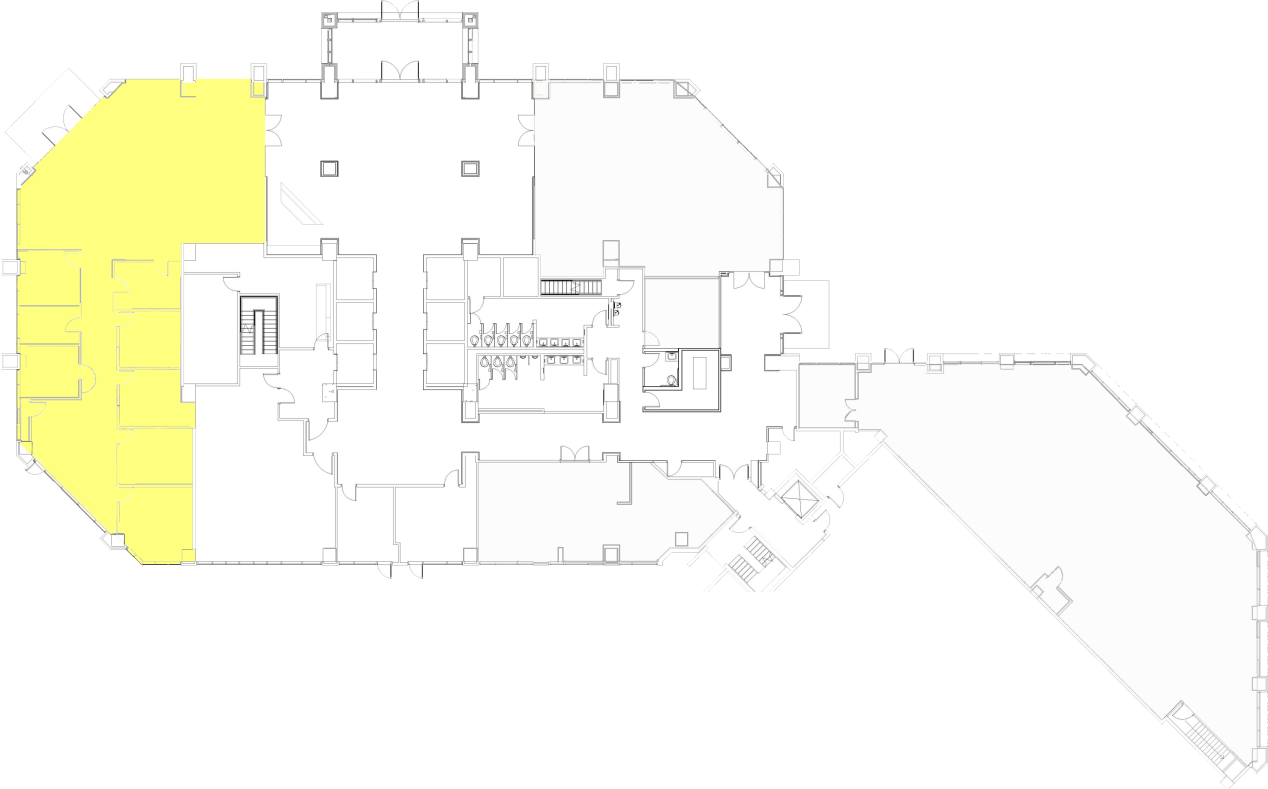
# RENAISSANCE PLAZA

230 North Elm Street | Greensboro, NC 27401

**AVAILABLE**

First Floor  
Suite 123

4,233 SF



**STEVE TURNER**  
sturner@capitalassociates.com  
336.333.2288  
capitalassociates.com

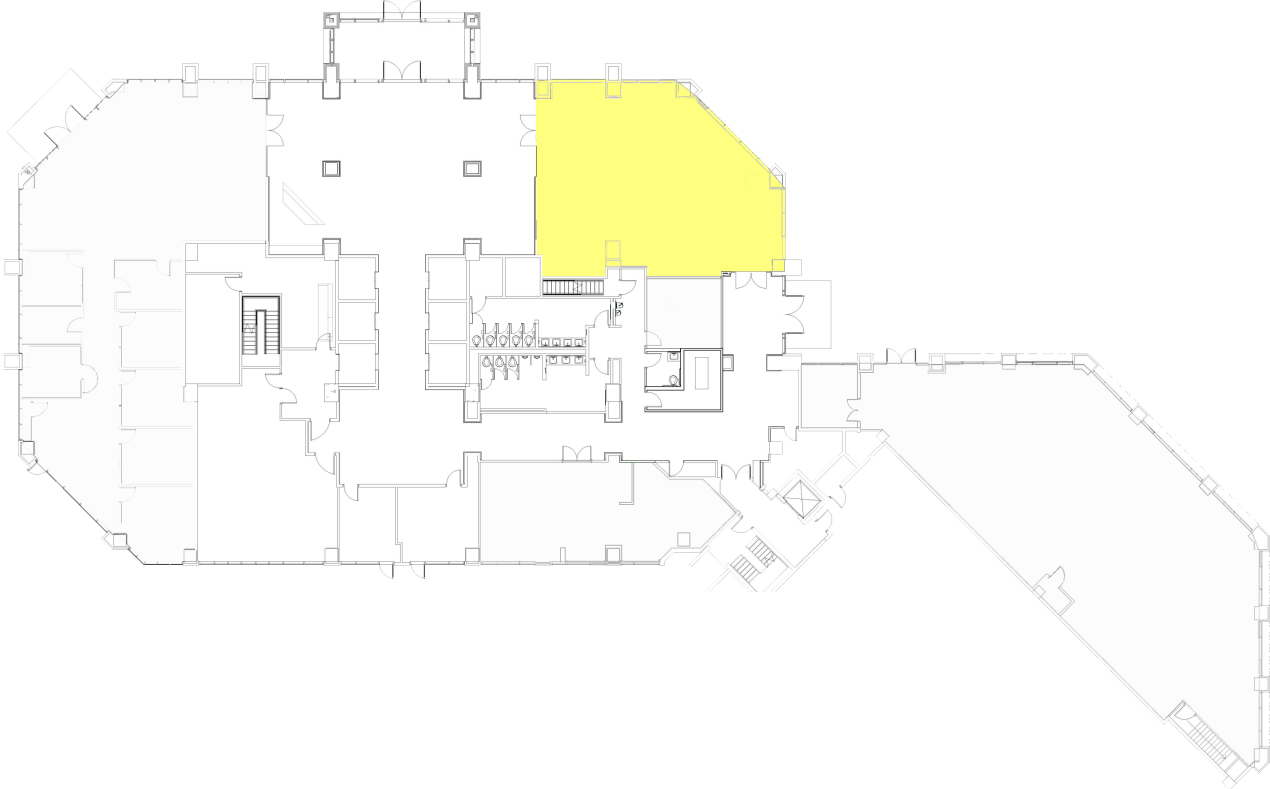
# RENAISSANCE PLAZA

230 North Elm Street | Greensboro, NC 27401

**AVAILABLE**

First Floor  
Suite 124

2,200 SF



**STEVE TURNER**  
sturner@capitalassociates.com  
336.333.2288  
capitalassociates.com

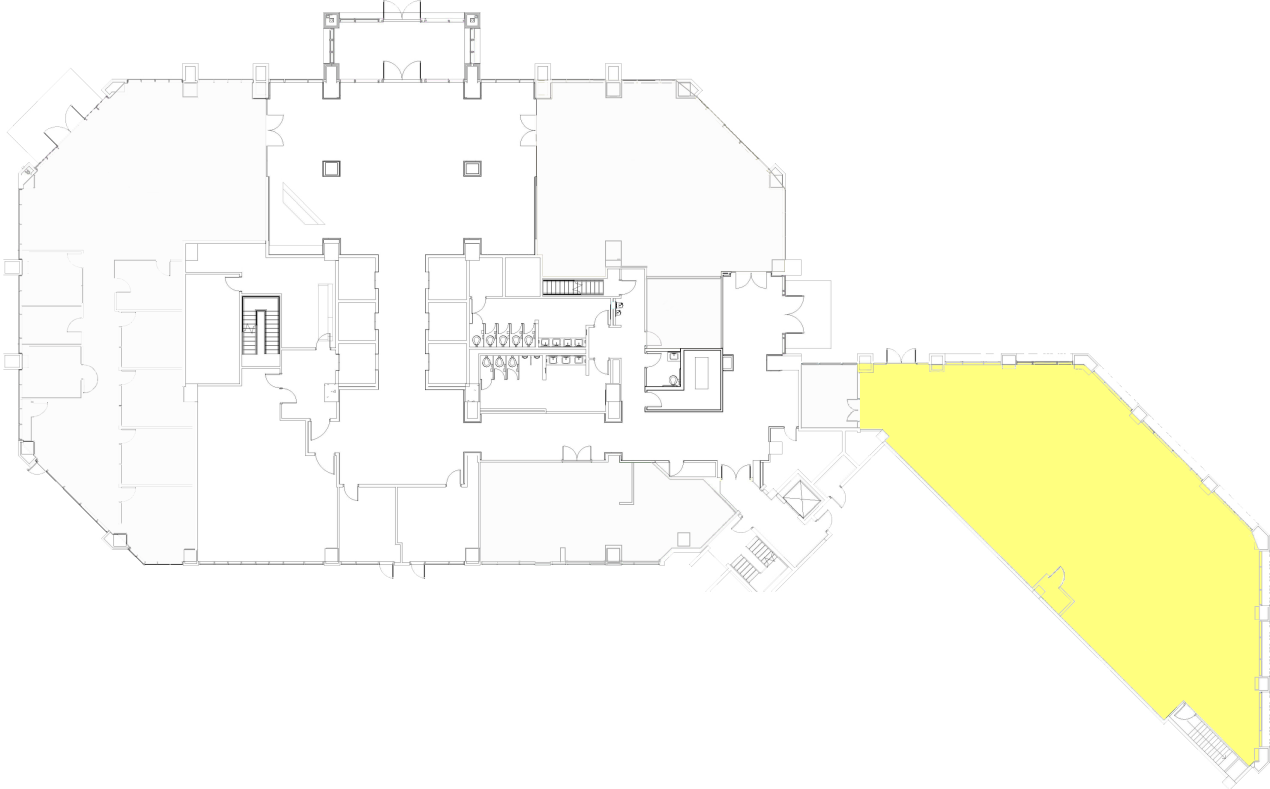
# RENAISSANCE PLAZA

230 North Elm Street | Greensboro, NC 27401

**AVAILABLE**

First Floor  
Suite 150

4,338 SF



**STEVE TURNER**  
sturner@capitalassociates.com  
336.333.2288  
capitalassociates.com

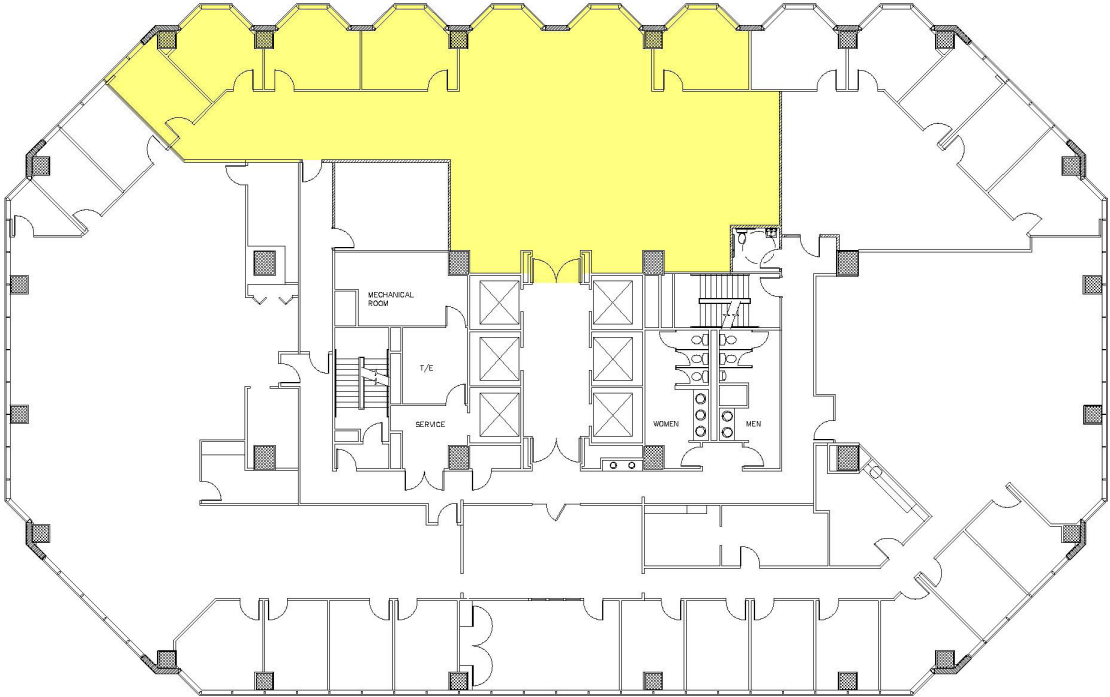
# RENAISSANCE PLAZA

230 North Elm Street | Greensboro, NC 27401

**AVAILABLE**

Eleventh Floor  
Suite 1152

4,321 SF



**STEVE TURNER**  
sturner@capitalassociates.com  
336.333.2288  
capitalassociates.com

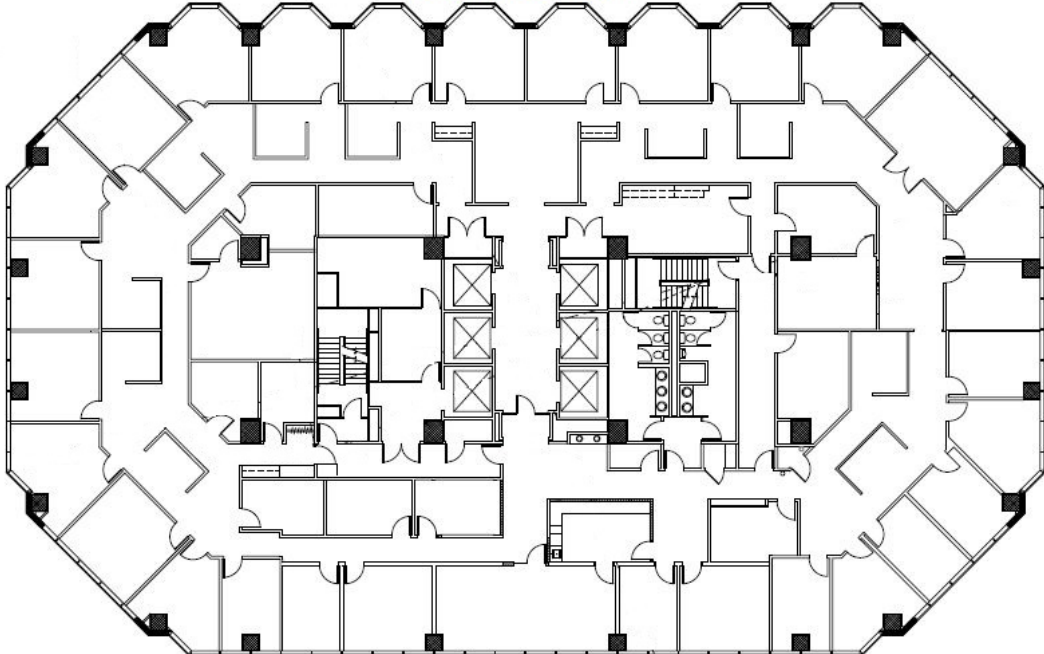
# RENAISSANCE PLAZA

230 North Elm Street | Greensboro, NC 27401

**AVAILABLE**

Fifteenth Floor

16,187 SF



**STEVE TURNER**  
sturner@capitalassociates.com  
336.333.2288  
capitalassociates.com

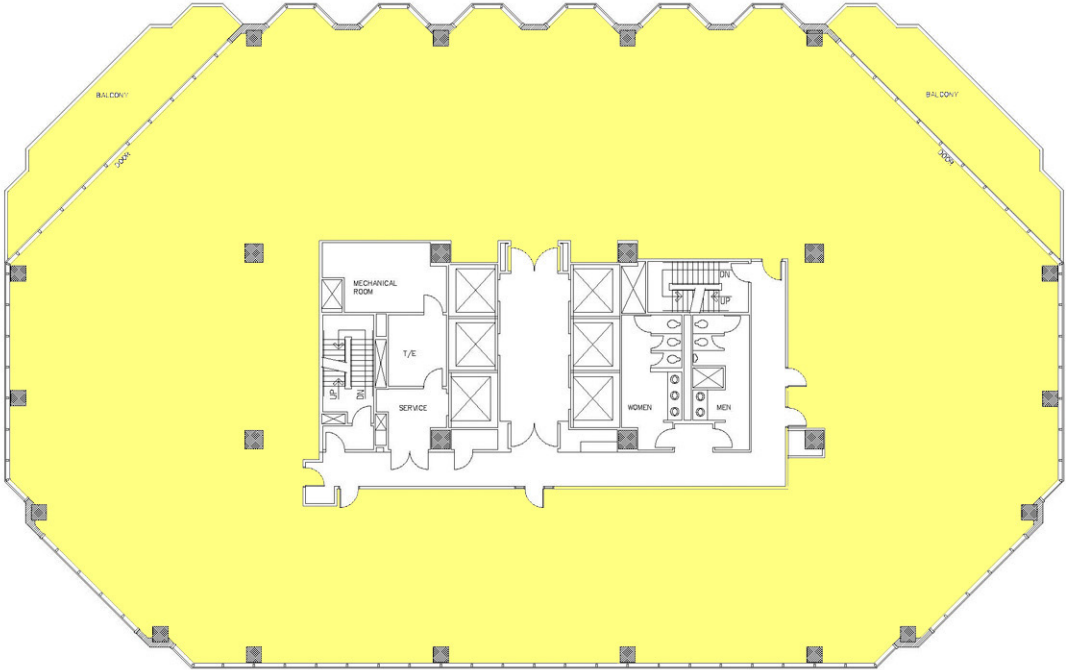
# RENAISSANCE PLAZA

230 North Elm Street | Greensboro, NC 27401

**AVAILABLE**

Sixteenth Floor  
Suite 1600

15,143 SF



**STEVE TURNER**  
sturner@capitalassociates.com  
336.333.2288  
capitalassociates.com





## LOBBY

Elegant and welcoming two-story main lobby renovated in 2022 with high-end modern finishes.

# RENAISSANCE PLAZA

230 North Elm Street | Greensboro, NC 27401

## ABOUT

Renaissance Plaza is a 287,464 SF 19-story, Class A high-rise tower located in Downtown Greensboro. A spectacular addition to the skyline. Among many other amenities, tenants enjoy an attached 324-space parking deck, on-site cafe and an award winning, mature landscaped plaza area.

### Walk Score®



81

VERY WALKABLE

Most errands can be accomplished on foot.



54

BIKEABLE

Biking is convenient for most trips.

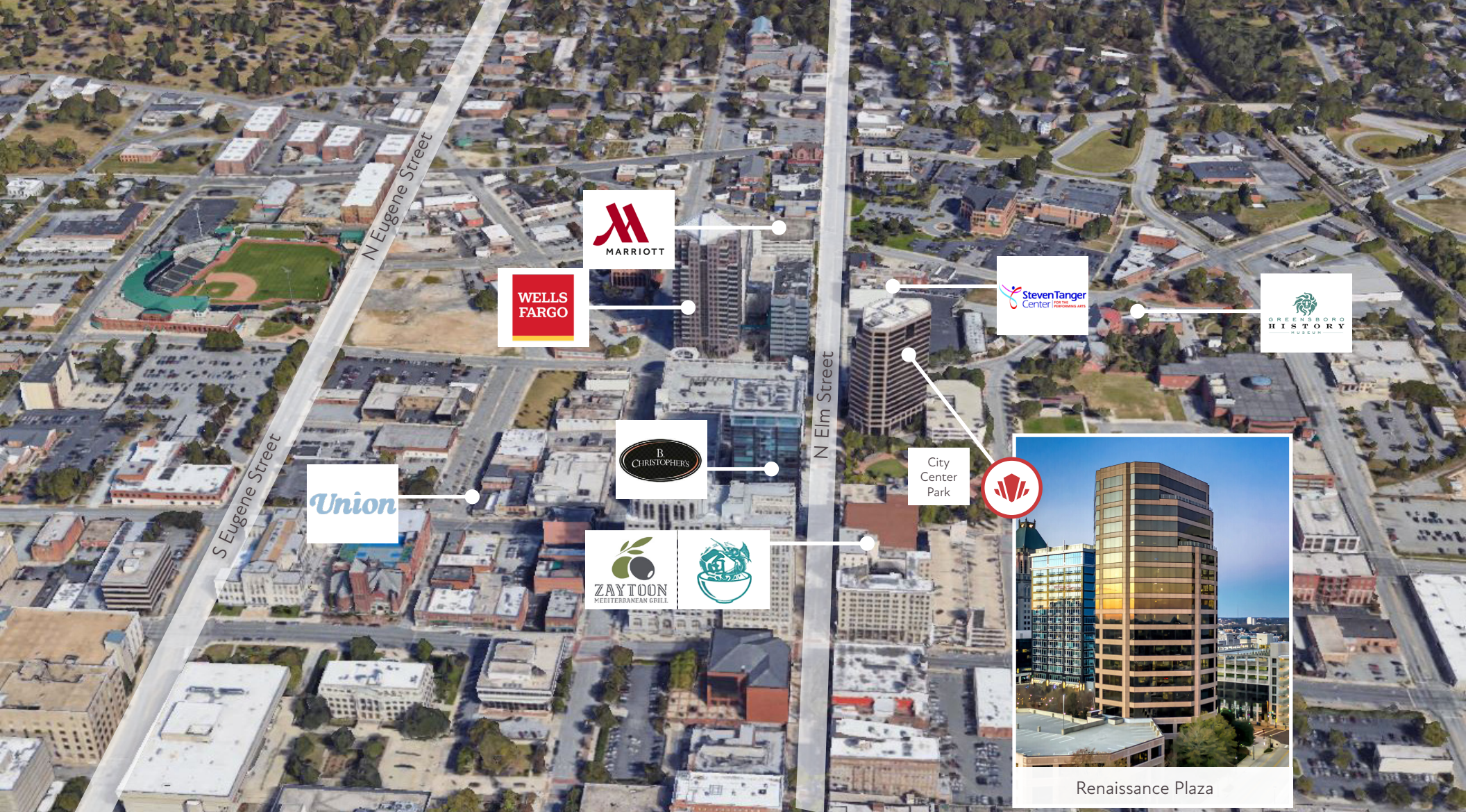


**STEVE TURNER**

[sturner@capitalassociates.com](mailto:sturner@capitalassociates.com)

336.333.2288

[capitalassociates.com](http://capitalassociates.com)



## POINTS OF INTEREST

### DINING

- Poke Bowl
- Europa Bar & Cafe
- B. Christopher's
- Savor The Moment Bakery
- Poke Bowl
- Midori Japanese Hibachi
- Zaytoon Mediterranean Grill
- Union Coffee

### CONVENIENCE

- Marriott
- Wells Fargo

### ENTERTAINMENT

- Greensboro History Museum
- Green Hill Center for North Carolina Art
- Steve Tanger Center