

FOR LEASE

FOR LEASE

RENAISSANCE PLAZA

230 North Elm Street
Greensboro, NC 27401



CAPITAL
ASSOCIATES®

RENAISSANCE PLAZA

230 North Elm Street -- Greensboro, NC 27401

PROPERTY TYPE	Office
BUILDING SIZE	281,226 SF
LEASING RATE	\$27.50 - \$40.00/SF
YEAR BUILT	1989
COUNTY	Guilford
LOCATION	Greensboro, NC
FLOORS	19



STEVE TURNER
STurner@CapitalAssociates.com
336.333.2288
CapitalAssociates.com



ABOUT

Renaissance Plaza is a 280,000 SF 19-story, Class A high-rise tower located in Downtown Greensboro. A spectacular addition to the skyline, this building includes a two-story atrium lobby, a patterned marble floor, granite walls, and a water feature. Among many other amenities, tenants enjoy an attached 324-space parking deck and an award winning, mature landscaped plaza area.

Walk Score®



81

VERY WALKABLE

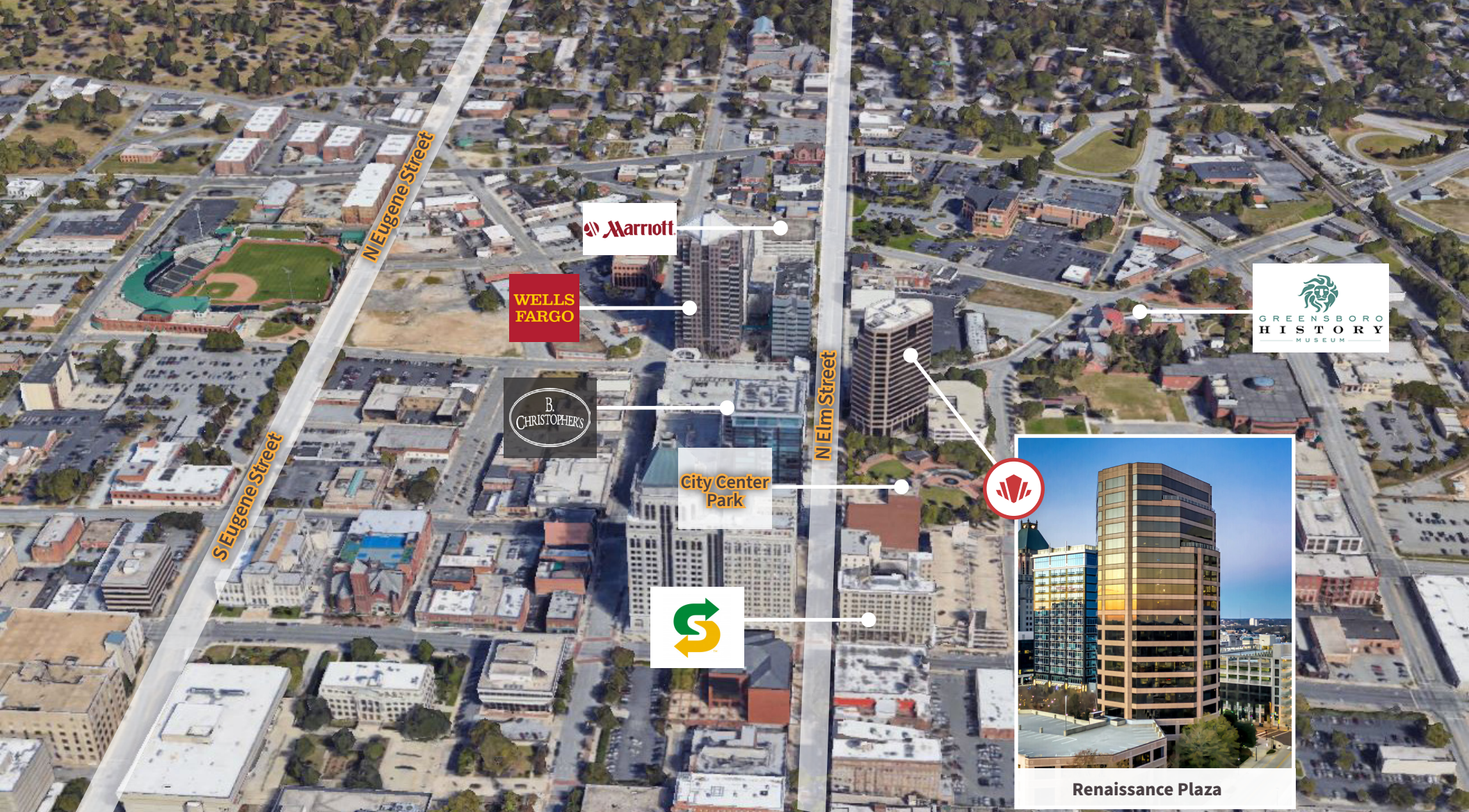
Most errands can be accomplished on foot.



54

BIKEABLE

Biking is convenient for most trips.



POINTS OF INTEREST

DINING

- Subway
- Europa Bar & Cafe
- B. Christopher's

CONVENIENCE

- Marriott
- Wells Fargo

ENTERTAINMENT

- Greensboro History Museum
- Green Hill Center for North Carolina Art



LOBBY

Elegant two-story main lobby atrium with granite and wood paneled walls, polished bronze revolving, swing and elevator doors.



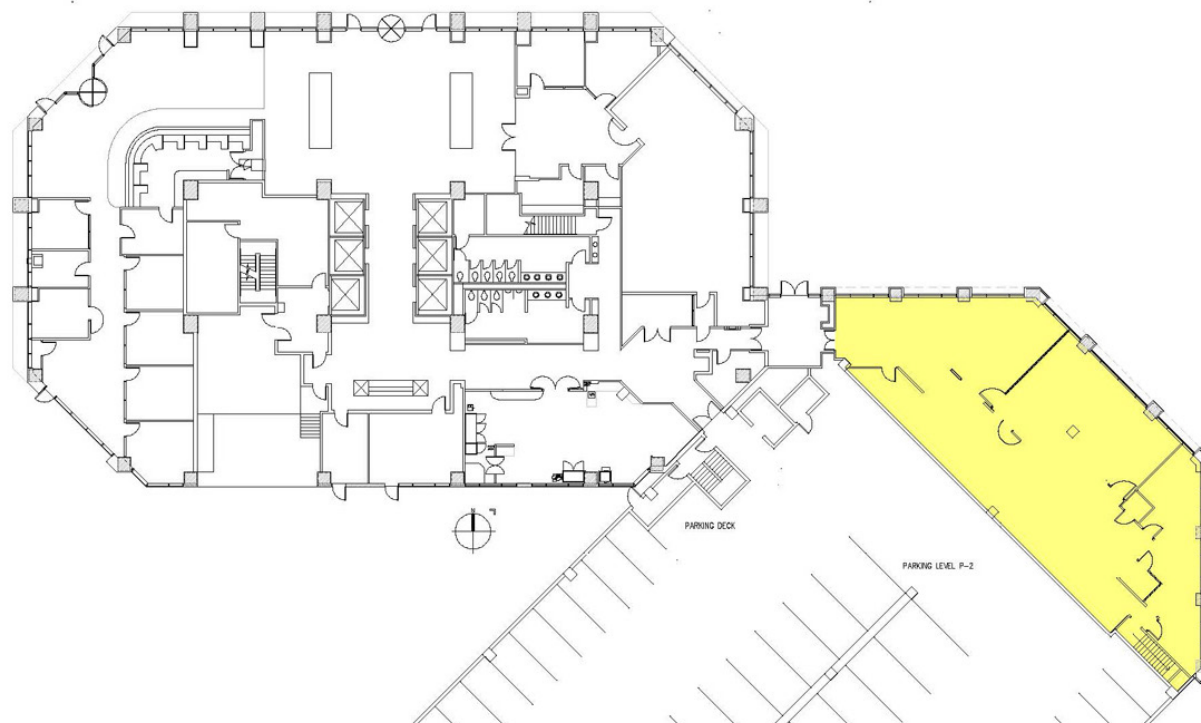
RENAISSANCE PLAZA

230 North Elm Street -- Greensboro, NC 27401

AVAILABLE

First Floor
Suite 150

4,338 SF



STEVE TURNER

STurner@CapitalAssociates.com

336.333.2288

CapitalAssociates.com

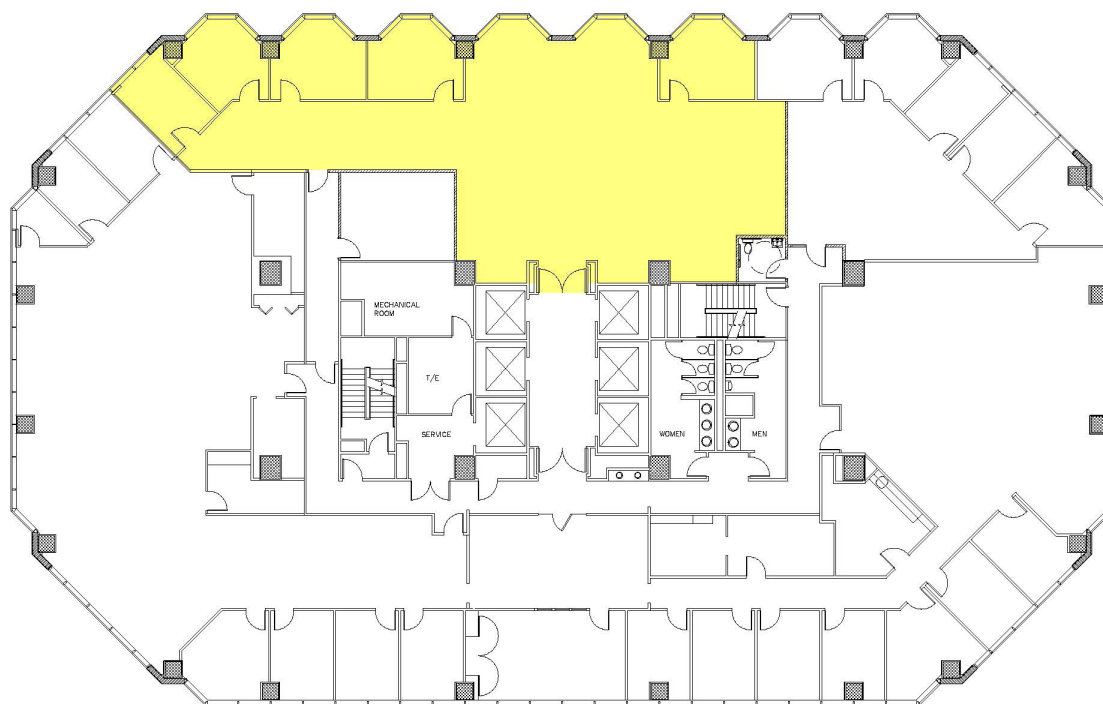
RENAISSANCE PLAZA

230 North Elm Street -- Greensboro, NC 27401

AVAILABLE

Eleventh Floor
Suite 1152

4,321 SF



STEVE TURNER

STurner@CapitalAssociates.com

336.333.2288

CapitalAssociates.com

RENAISSANCE PLAZA

230 North Elm Street -- Greensboro, NC 27401

AVAILABLE

Sixteenth Floor
Suite 1600

15,143 SF

