

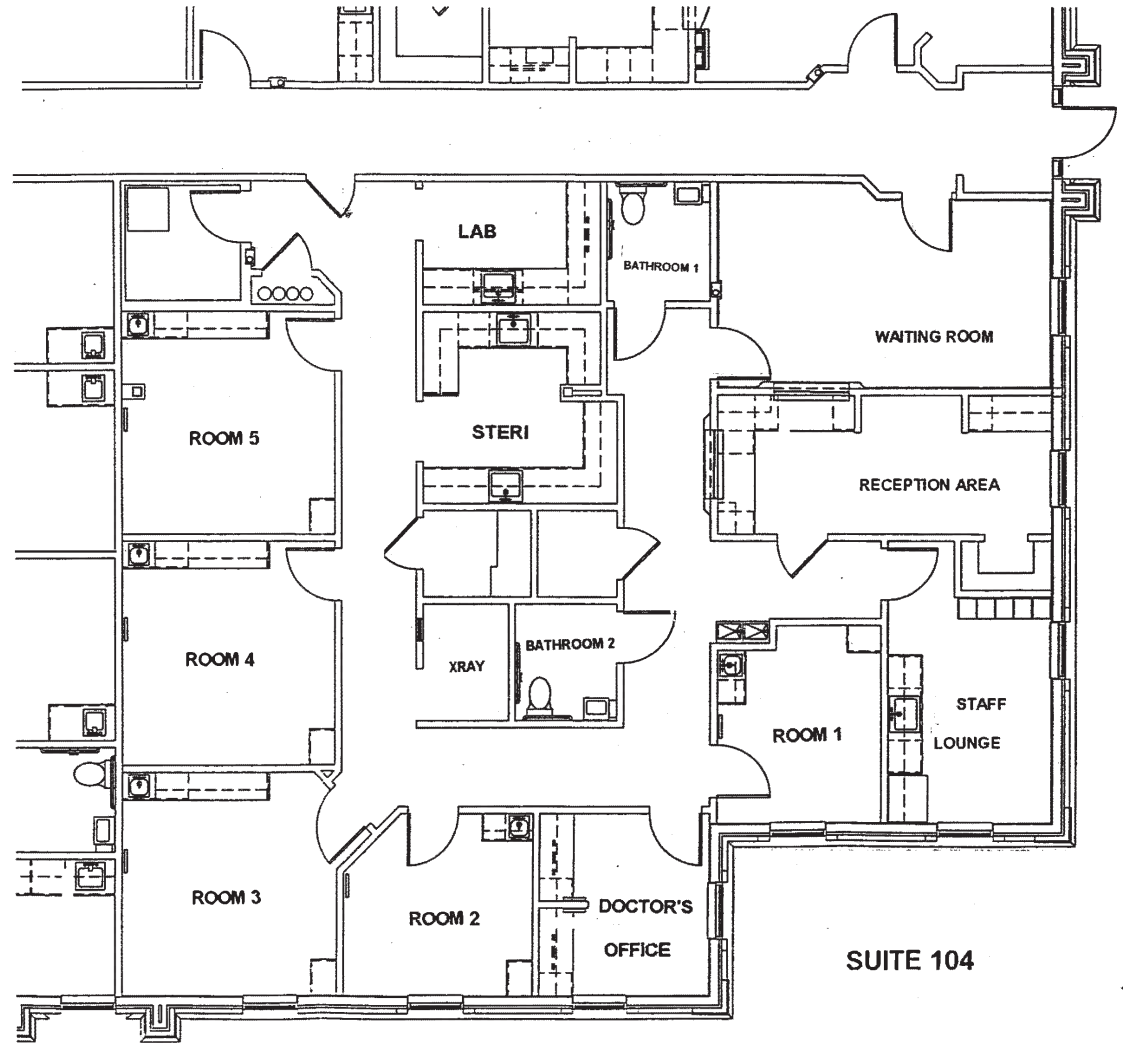
WAKEFIELD HEALTH PARK

11081 Forest Pines Drive | Raleigh, NC 27614

AVAILABLE

First Floor
Suite 104

2,848 SF



BRET MULLER

919.523.4200

bmuller@capitalassociates.com

WES JOHNSON

919.422.4853

wjohnson@capitalassociates.com

