

FOR SALE

1618 GLENWOOD AVE

RALEIGH, NC 27608

PRIME LOCATION IN THE HEART OFFIVE POINTS



CAPITAL
ASSOCIATES

FIVE POINTS PROPERTY FOR SALE

1618 GLENWOOD AVENUE sits prominently near Raleigh's Five Points intersection, next to The Rialto Theatre. This is a **rare opportunity** to own a prime piece of Raleigh real estate, consisting of 3,447 SF with a large rear gravel parking lot as well as a paved front parking lot. This building sits on 0.34 acres facing Glenwood Avenue. Great signage opportunity!

This prominent piece of real estate is suitable for a single-tenant occupant or future re-development. The current zoning is Commercial Mixed Use.

ADDRESS	1618 Glenwood Avenue, Raleigh, NC 27608
PIN	1704571313
SIZE	3,447 SF
YEAR BUILT	1940
ZONING	CX-3-DE (Commercial Mixed Use)
ACREAGE	0.34
PARKING	18+ Spaces
SALE PRICE	Contact Broker

Click **HERE**
for a
Virtual Tour!

BRET MULLER

Principal

919.523.4200

bmuller@capitalassociates.com

WES JOHNSON

Associate Principal

919.422.4853

wjohnson@capitalassociates.com



INTERIOR



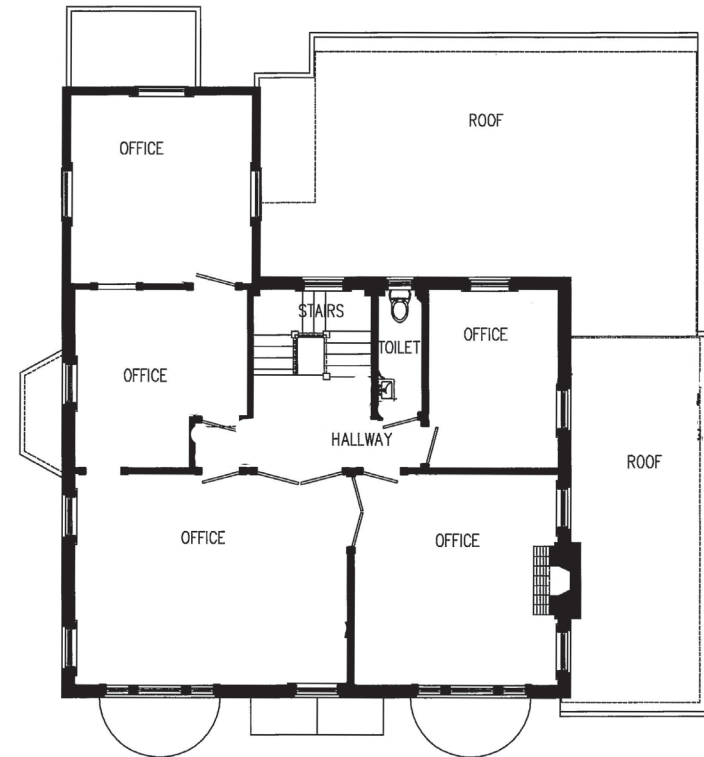
- Existing law firm use
- Great access/egress to and from Glenwood and Wade Avenue
- Short walk to the many shops, restaurants and cafes that Five Points offers
- Great signage opportunity



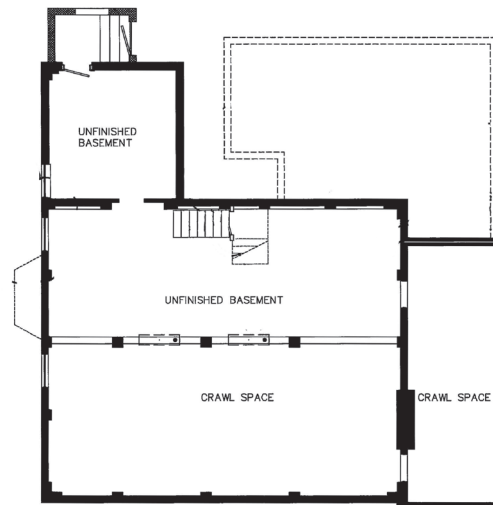
FLOOR PLAN



FIRST FLOOR

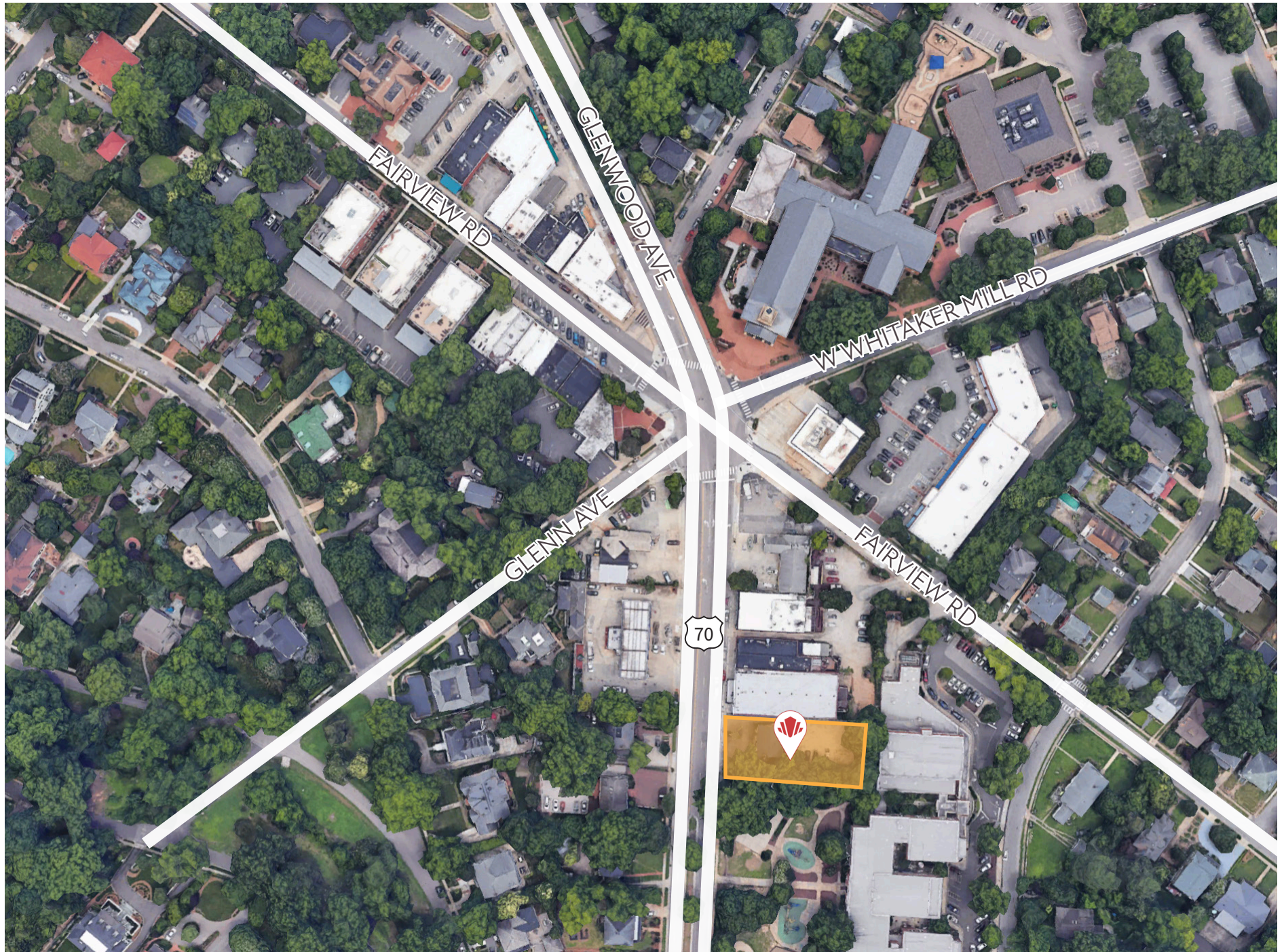


SECOND FLOOR



BASEMENT

SITE SURVEY



FIVE POINTS

POINTS OF INTEREST

Bloomsbury Bistro

Lonerider Brewing

Hayes Barton Cafe and Dessertery

Lily's Pizza

NOFO @ The Pig

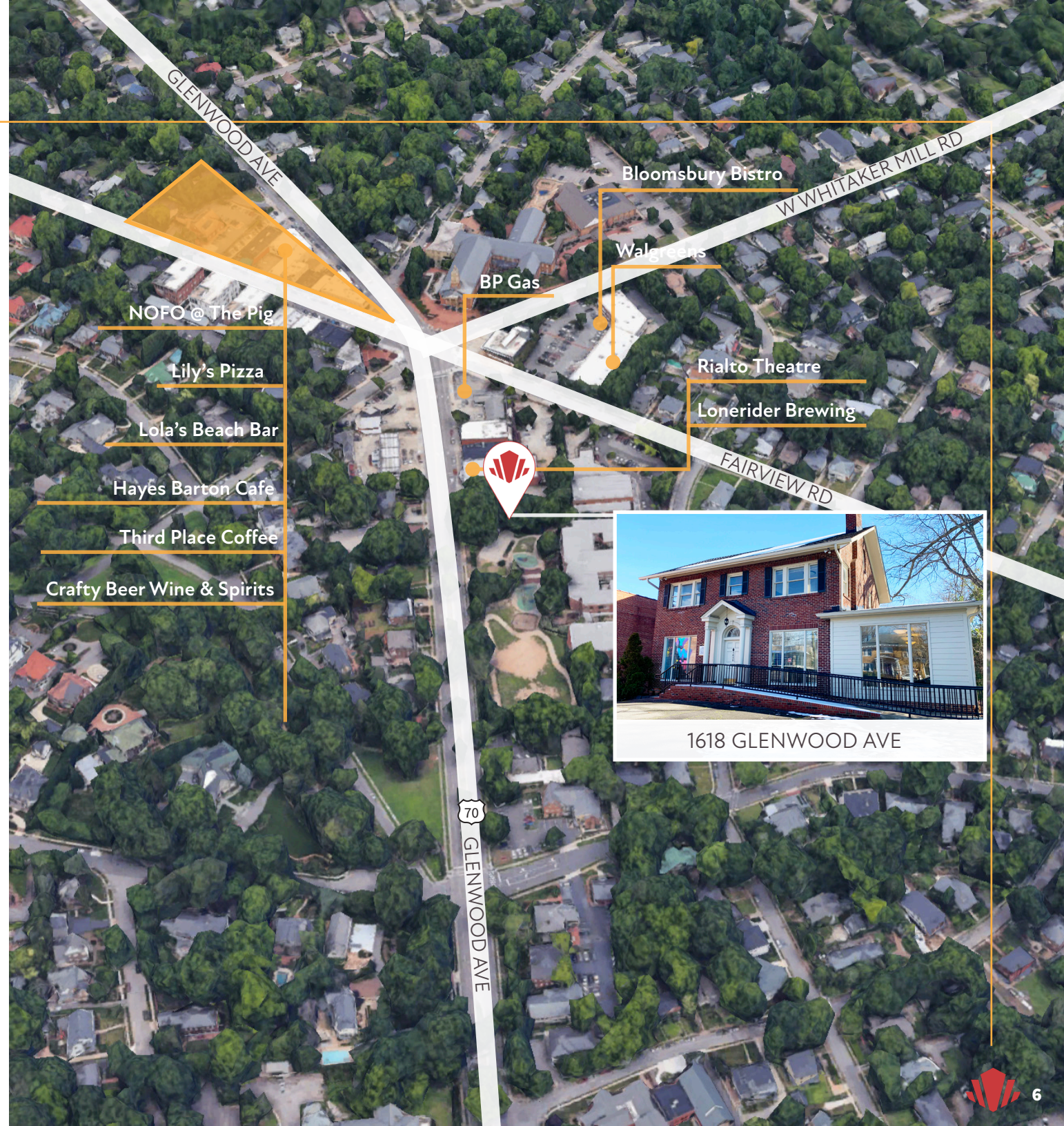
Tic Toc Escape Rooms

The Rialto Theatre

Lola's Beach Bar

Crafty Beer, Wine, and Spirits

The Third Place Coffee Shop



1618 GLENWOOD AVE

LOCATION OVERVIEW



Downtown Raleigh



Village District



North Hills



RDU Intl. Airport

Approximately
37,500 vehicles
drive on Glenwood
Ave per day

Less than a
10 minute drive
to I-40 and
I-440

Incredible
**ACCESS TO
DOWNTOWN!**

CONTACT

www.capitalassociates.com

BRET MULLER

bmuller@capitalassociates.com
919.523.4200

WES JOHNSON

wjohnson@capitalassociates.com
919.422.4853



**CAPITAL
ASSOCIATES®**