

FOR LEASE



THE MEDICAL PARK 300

300 Ashville Avenue | Cary, NC 27518



CAPITAL
ASSOCIATES®

THE MEDICAL PARK 300

300 Ashville Avenue | Cary, NC 27518

PROPERTY TYPE	Medical Office
BUILDING SIZE	62,464 SF
LEASING RATE	\$34.50/SF
LEASE TYPE	Full Service
YEAR BUILT	1998
COUNTY	Wake
LOCATION	Cary, NC
FLOORS	3



BRET MULLER
919.523.4200
bmuller@capitalassociates.com

WES JOHNSON
919.422.4853
wjohnson@capitalassociates.com



THE MEDICAL PARK 300

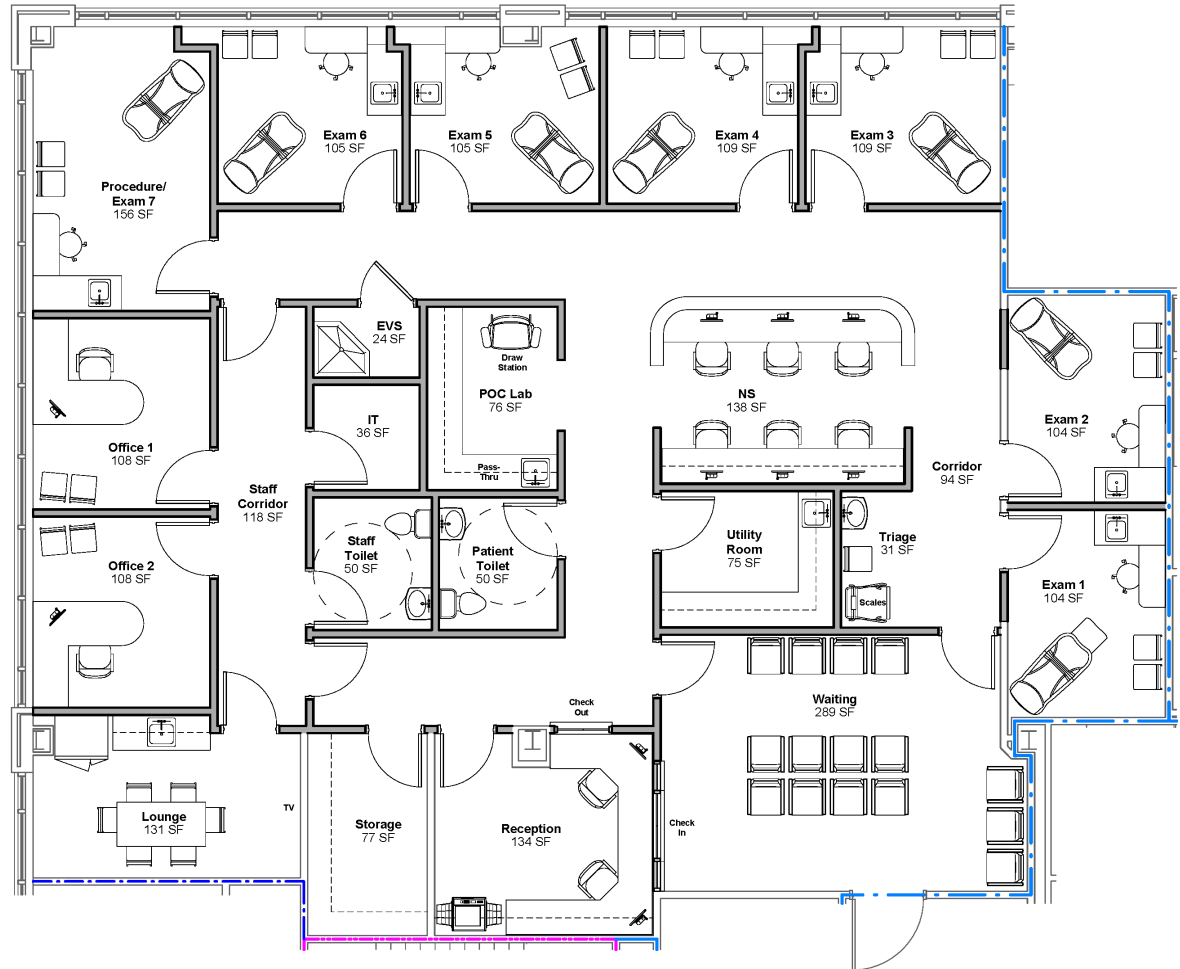
300 Ashville Avenue | Cary, NC 27518

[CLICK HERE FOR VIRTUAL TOUR.](#)
[CLICK HERE FOR VIDEO TOUR.](#)

AVAILABLE

Second Floor
Suite 220

3,590 SF
Spec Suite



BRET MULLER

919.523.4200

bmuller@capitalassociates.com

WES JOHNSON

919.422.4853

wjohnson@capitalassociates.com



THE MEDICAL PARK 300

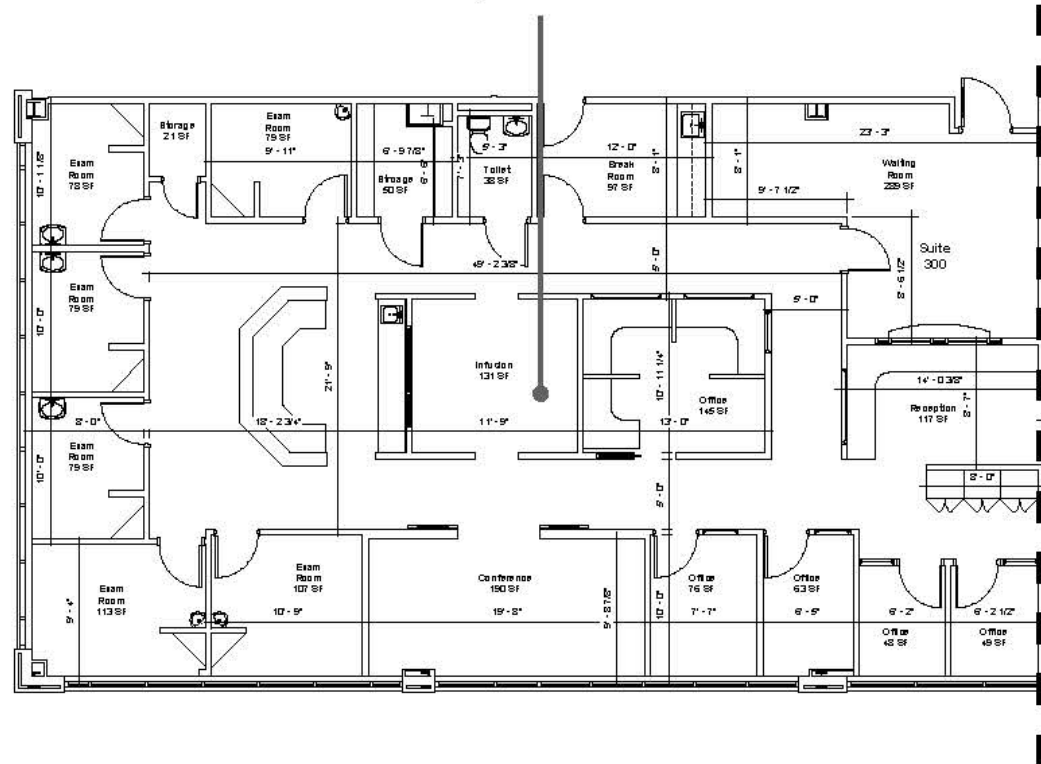
300 Ashville Avenue | Cary, NC 27518

AVAILABLE

Third Floor
Suite 300

3,507 SF

Suite 300
3,507 RSF



BRET MULLER

919.523.4200

bmuller@capitalassociates.com

WES JOHNSON

919.422.4853

wjohnson@capitalassociates.com



THE MEDICAL PARK 300

300 Ashville Avenue | Cary, NC 27518

PROPERTY HIGHLIGHTS

The Medical Park 300 is a 62,464 square foot three-story medical office building adjacent to Cary's WakeMed Campus. Situated in the heart of Cary's medical hub, it's home to a diverse mix of renowned Medical Practitioners and Specialists.

- Elegant and newly renovated lobby area
- Responsive On-Site Property Management and Maintenance Staff
- Close proximity to restaurants, RDU International Airport, and lodging
- Easily accessible from I-40, US-64, US-1 and the I-440 beltline



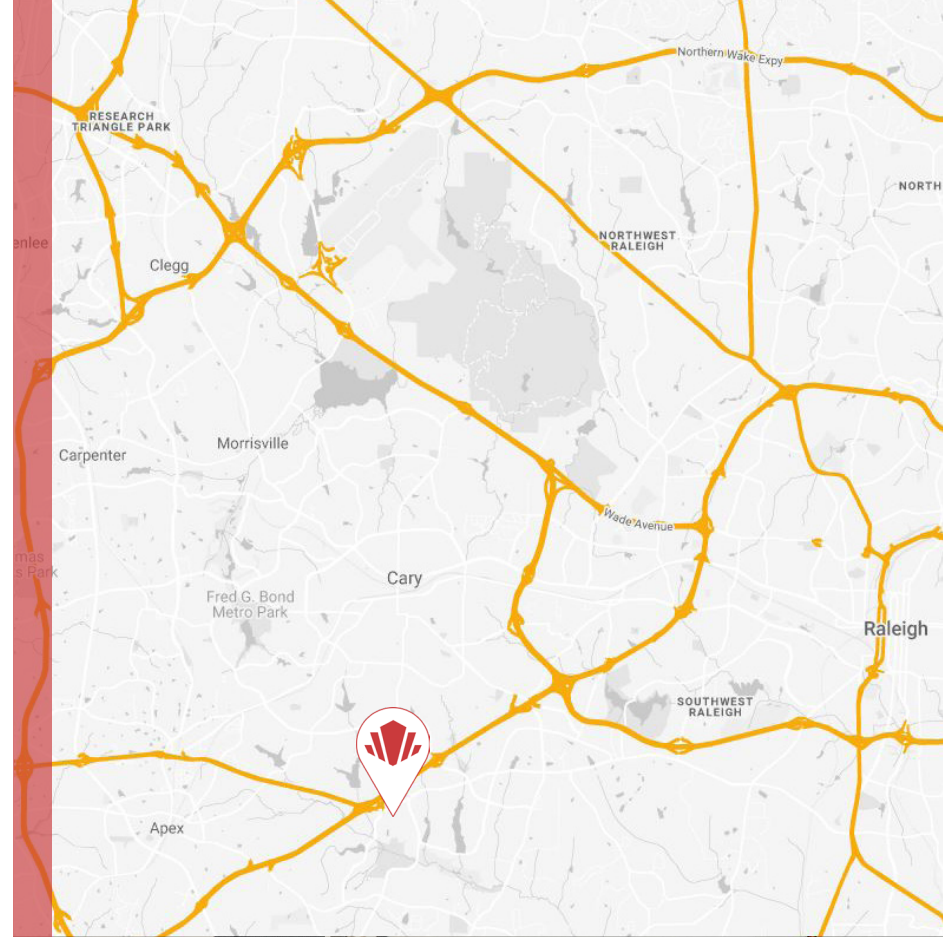
CAPITAL ASSOCIATES.

BRET MULLER

919.523.4200
bmuller@capitalassociates.com

WES JOHNSON

919.422.4853
wjohnson@capitalassociates.com





Suite 220 | 3,590 SF

