

# THE MEDICAL PARK 300

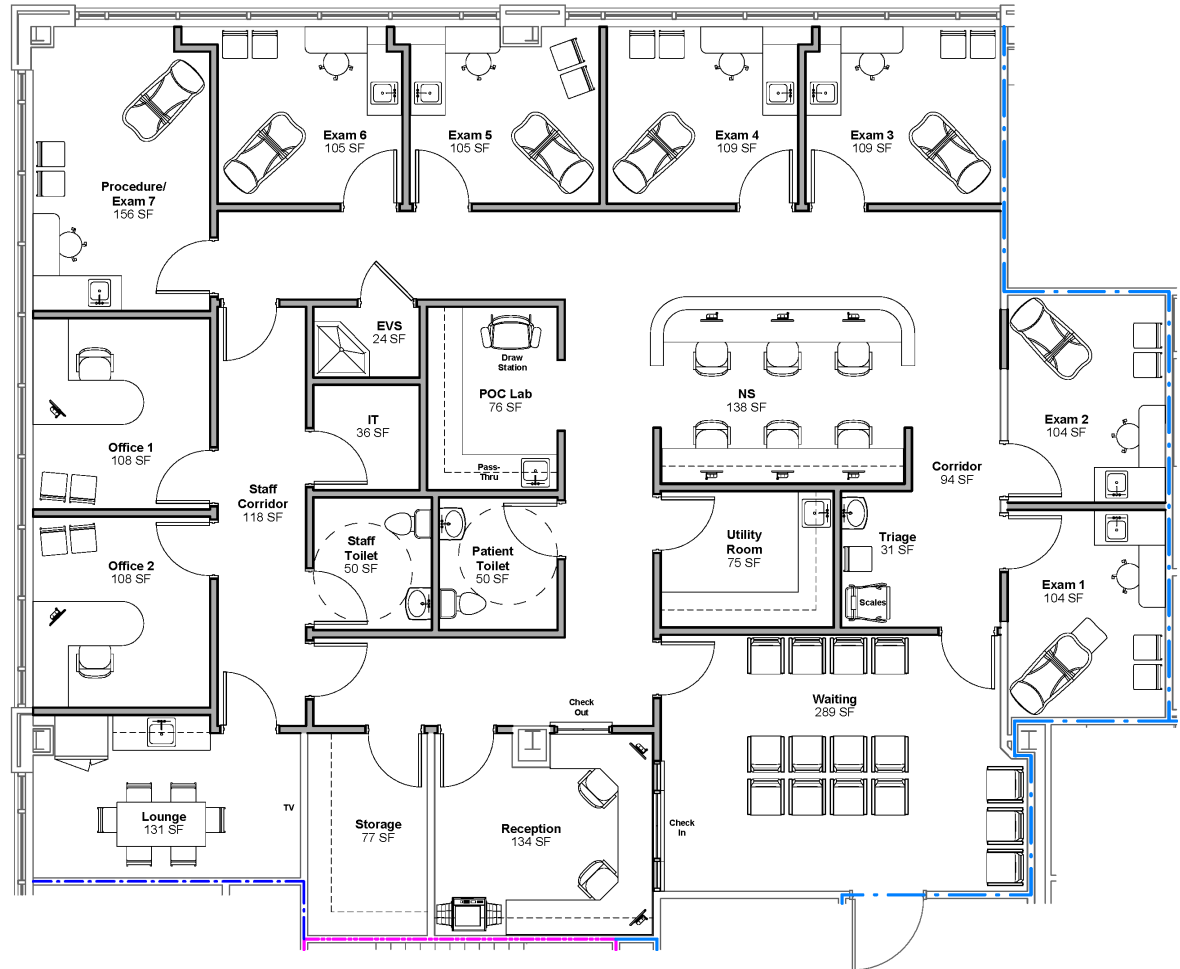
300 Ashville Avenue | Cary, NC 27518

[CLICK HERE FOR VIRTUAL TOUR.](#)  
[CLICK HERE FOR VIDEO TOUR.](#)

**AVAILABLE**

Second Floor  
Suite 220

3,590 SF  
Spec Suite



**BRET MULLER**

919.523.4200

bmuller@capitalassociates.com

**WES JOHNSON**

919.422.4853

wjohnson@capitalassociates.com

