

FOR LEASE



NORTH PARK I

11635 Northpark Drive | Wake Forest, NC 27587



CAPITAL
ASSOCIATES®

NORTHPARK I

11635 Northpark Drive | Wake Forest, NC 27587

PROPERTY TYPE	Medical Office
BUILDING SIZE	41,887 SF
LEASING RATE	\$29.50/SF
LEASE TYPE	Full Service
YEAR BUILT	1996
COUNTY	Wake
LOCATION	Wake Forest, NC
FLOORS	3
PARKING	4.84/1000 SF

BRET MULLER
919.523.4200
bmuller@capitalassociates.com

WES JOHNSON
919.422.4853
wjohnson@capitalassociates.com



NORTH PARK I

11635 Northpark Drive | Wake Forest, NC 27587

**AVAILABLE
2025**

Third Floor Spec Suite

3,859 SF



BRET MULLER

919.523.4200

bmuller@capitalassociates.com

WES JOHNSON

919.422.4853

wjohnson@capitalassociates.com



NORTH PARK I

11635 Northpark Drive | Wake Forest, NC 27587

AVAILABLE

Third Floor
Suite 360

2,822 SF

BRET MULLER

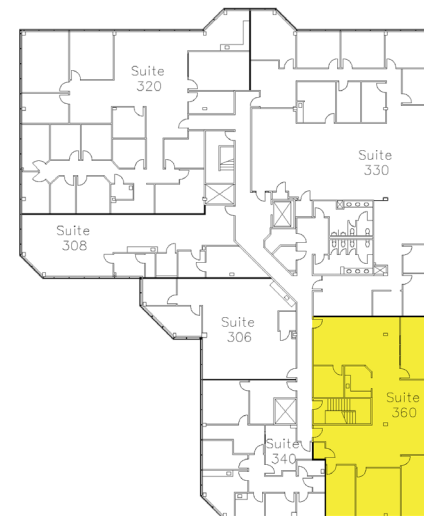
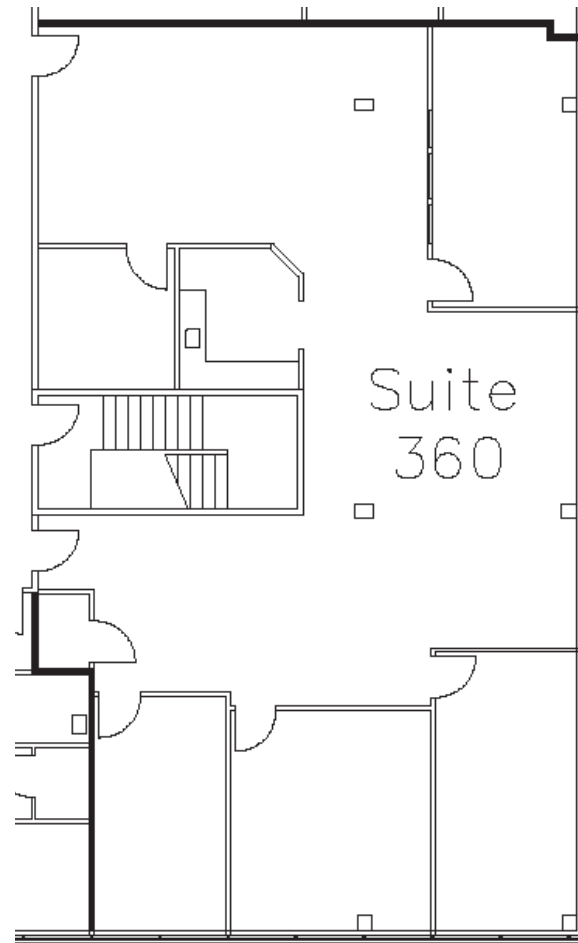
919.523.4200

bmuller@capitalassociates.com

WES JOHNSON

919.422.4853

wjohnson@capitalassociates.com



NORTHPARK I

11635 Northpark Drive | Wake Forest, NC 27587

PROPERTY HIGHLIGHTS

Northpark I is a brick, window-lined 41,887 square foot three-story medical office building located in Wake Forest, NC.

- Conveniently located near the intersection of Hwy 98 Bypass and Hwy 1 (Capital Boulevard) and easily accessible from Wake Forest and surrounding areas.
- Within 2 miles of Rex Healthcare of Wakefield and many other medical providers.

BRET MULLER

919.523.4200

bmuller@capitalassociates.com

WES JOHNSON

919.422.4853

wjohnson@capitalassociates.com

