

FOR LEASE



TRYON OFFICE CENTER II

1110 SE Cary Parkway | Cary, NC 27518



CAPITAL
ASSOCIATES®

TRYON OFFICE CENTER II

1110 SE Cary Parkway | Cary, NC 27518

PROPERTY TYPE	Medical Office
BUILDING SIZE	32,500 SF
LEASING RATE	\$36.50/SF
LEASE TYPE	Modified Gross
YEAR BUILT	2006
COUNTY	Wake
LOCATION	Cary, NC
FLOORS	2
PARKING	4.0/1,000 SF

BRET MULLER
919.523.4200
bmuller@capitalassociates.com

WES JOHNSON
919.422.4853
wjohnson@capitalassociates.com



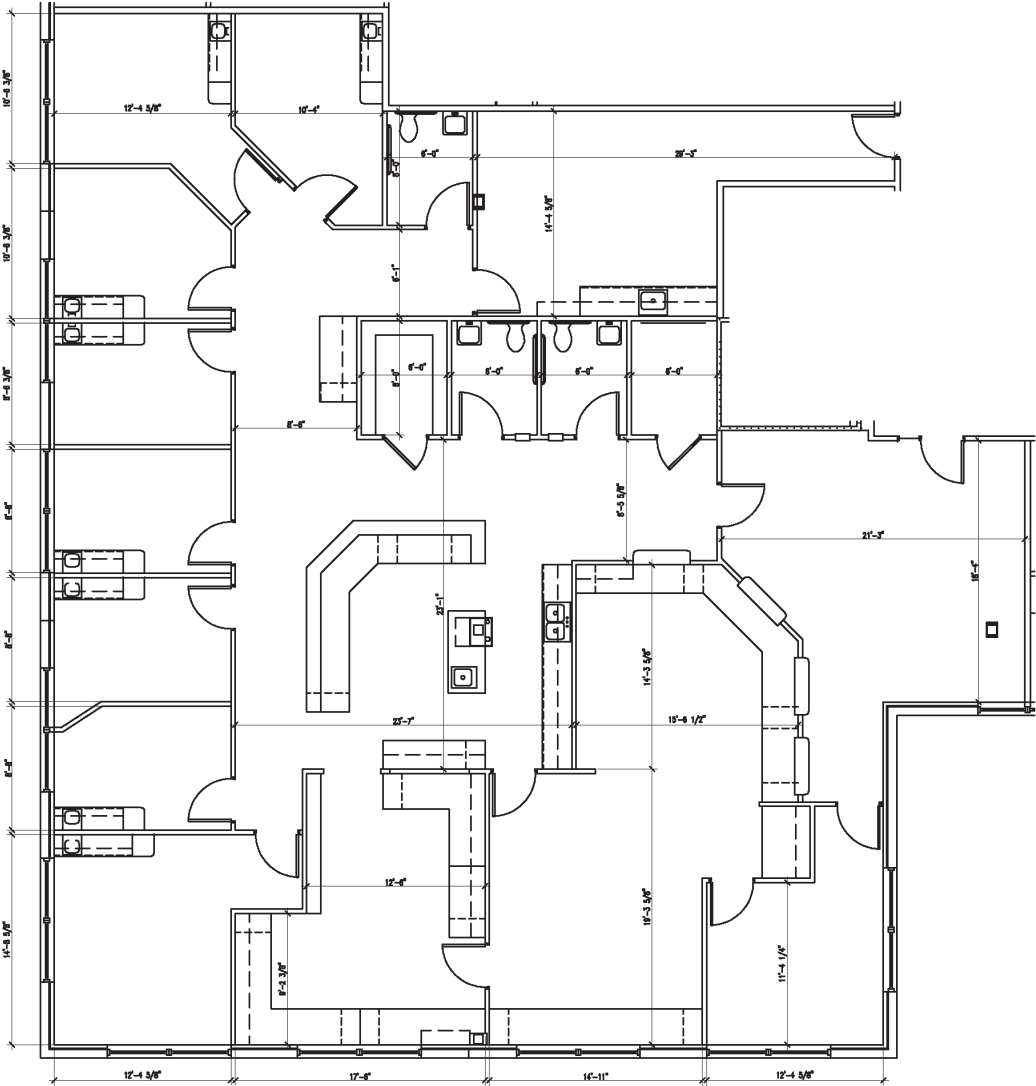
TRYON OFFICE CENTER II

1110 SE Cary Parkway | Cary, NC 27518

AVAILABLE
September 1, 2024

Second Floor
Suite 203

4,598 SF



BRET MULLER
919.523.4200
bmuller@capitalassociates.com

WES JOHNSON
919.422.4853
wjohnson@capitalassociates.com



TRYON OFFICE CENTER II

1110 SE Cary Parkway | Cary, NC 27518

PROPERTY HIGHLIGHTS

Tryon Office Center II is a two-story, Class B medical office building totaling 32,500 SF and located one mile from Cary's WakeMed Campus. It's situated in the heart of Cary's medical hub and home to a diverse mix of renowned Medical Practitioners and Specialists.

- Located near restaurants, RDU International Airport, and lodging
- Easily accessible from I-40, US-64, US-1, and the I-440 Beltline

BRET MULLER

919.523.4200

bmuller@capitalassociates.com

WES JOHNSON

919.422.4853

wjohnson@capitalassociates.com

