

FOR LEASE



NORTH PARK II

11640 Northpark Drive | Wake Forest, NC 27587



CAPITAL
ASSOCIATES®

NORTHPARK II

11640 Northpark Drive | Wake Forest, NC

PROPERTY TYPE Medical Office
BUILDING SIZE 52,236 SF
LEASING RATE \$28.50/SF
LEASE TYPE Modified Gross
(tenant responsible for janitorial)
YEAR BUILT 2008
COUNTY Wake
LOCATION Wake Forest, NC
FLOORS 3
PARKING 4/1000 SF

BRET MULLER
919.523.4200
bmuller@capitalassociates.com

WES JOHNSON
919.422.4853
wjohnson@capitalassociates.com



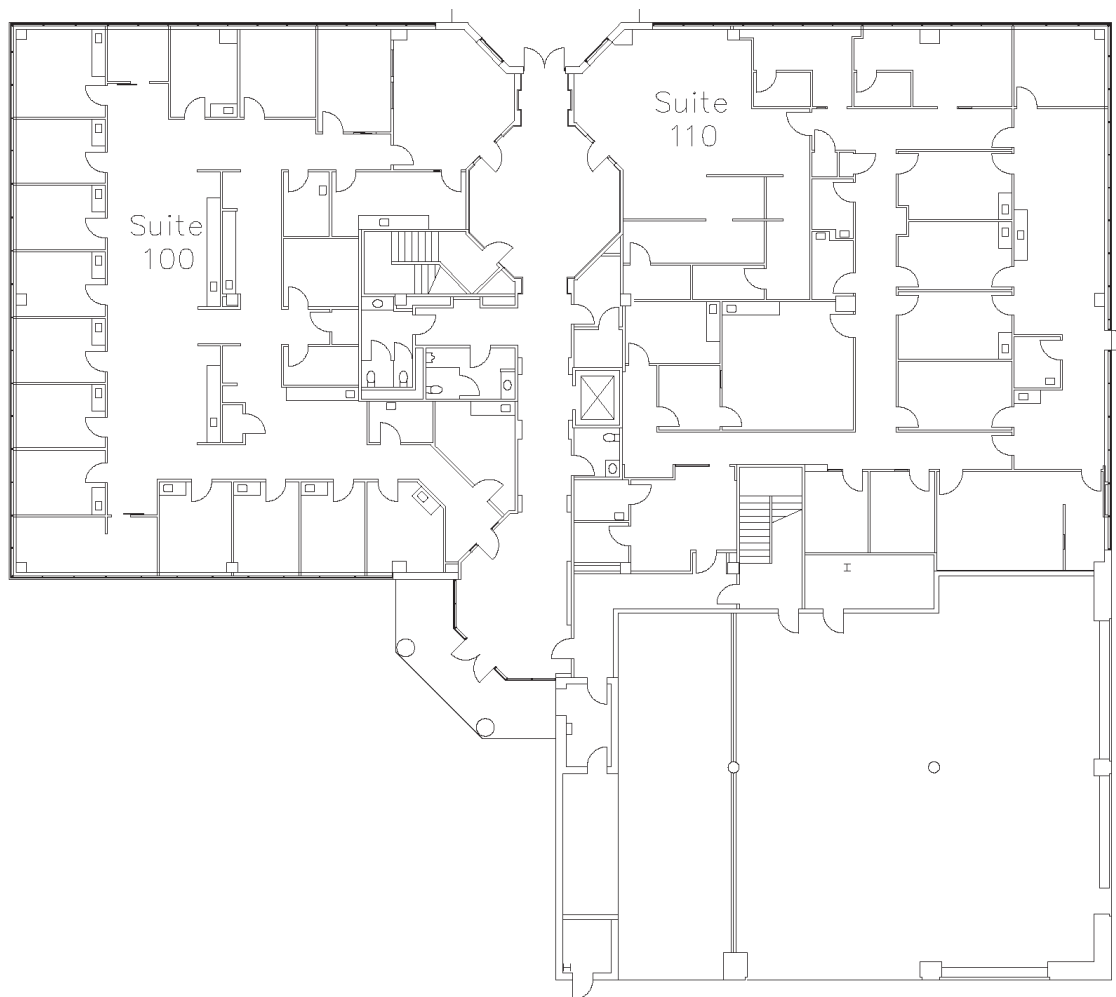
NORTHPARK II

11640 Northpark Drive | Wake Forest, NC

AVAILABLE

First Floor
Suite 100

6,316 SF



BRET MULLER

919.523.4200

bmuller@capitalassociates.com

WES JOHNSON

919.422.4853

wjohnson@capitalassociates.com



NORTH PARK II

11640 Northpark Drive | Wake Forest, NC

PROPERTY HIGHLIGHTS

Northpark II is a brick, window-lined 52,236 square foot three-story medical office building located in Wake Forest, NC.

- Conveniently located near the intersection of Hwy 98 Bypass and Hwy 1 (Capital Boulevard) and easily accessible from Wake Forest and surrounding areas.
- Within 2 miles of Rex Healthcare of Wakefield and many other medical providers.

BRET MULLER

919.523.4200

bmuller@capitalassociates.com



WES JOHNSON

919.422.4853

wjohnson@capitalassociates.com

