

FOR LEASE



# TRIANGLE MEDICAL CENTER

400 Ashville Avenue | Cary, NC 27518



CAPITAL  
ASSOCIATES®



# TRIANGLE MEDICAL CENTER

400 Ashville Avenue | Cary, NC 27518

<b>PROPERTY TYPE</b>	Medical Office
<b>BUILDING SIZE</b>	30,492 SF
<b>TOTAL SPACE AVAILABLE</b>	6,363 SF
SUITE 200	14,558 SF
SUITE 300	3,351 SF
SUITE 315	1,421 SF
SUITE 360	1,595 SF
<b>LEASING RATE</b>	\$34.50/SF
<b>LEASE TYPE</b>	Full Service
<b>YEAR BUILT</b>	1995
<b>COUNTY</b>	Wake
<b>LOCATION</b>	Cary, NC
<b>FLOORS</b>	3

**BRET MULLER**  
919.523.4200  
bmuller@capitalassociates.com

**WES JOHNSON**  
919.422.4853  
wjohnson@capitalassociates.com



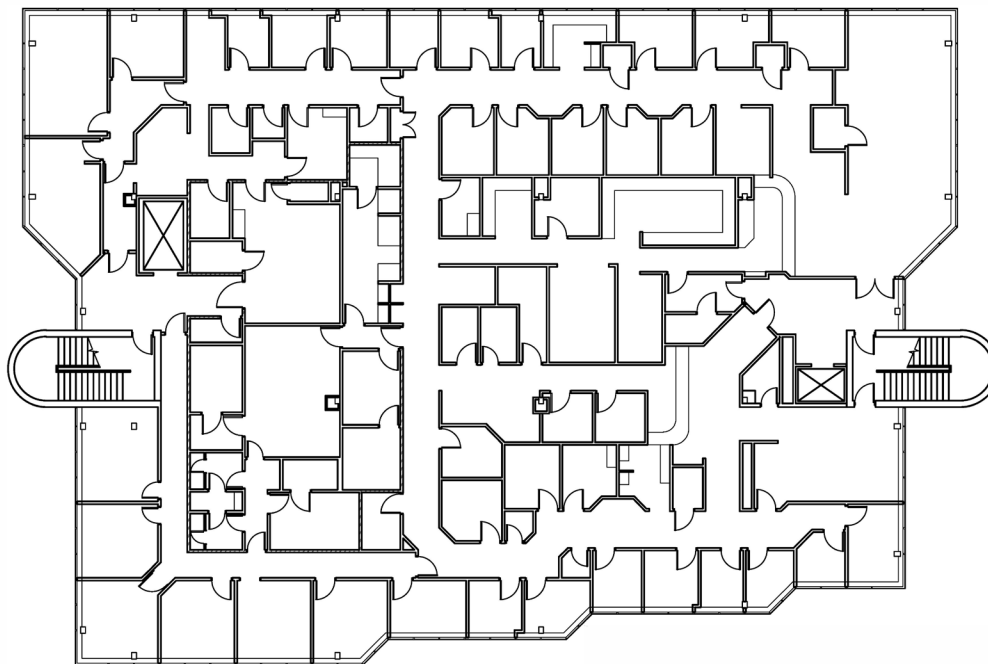
# TRIANGLE MEDICAL CENTER

400 Ashville Avenue | Cary, NC 27518

**AVAILABLE**  
January 1, 2026

Entire Second Floor  
Suite 200

14,558 SF



**BRET MULLER**

919.523.4200

[bmuller@capitalassociates.com](mailto:bmuller@capitalassociates.com)

**WES JOHNSON**

919.422.4853

[wjohnson@capitalassociates.com](mailto:wjohnson@capitalassociates.com)



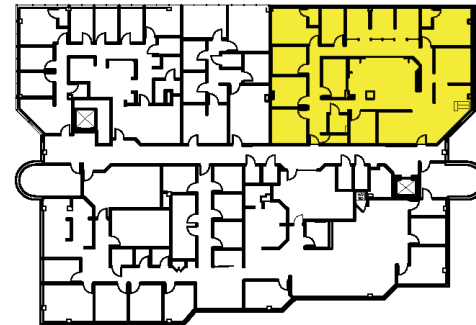
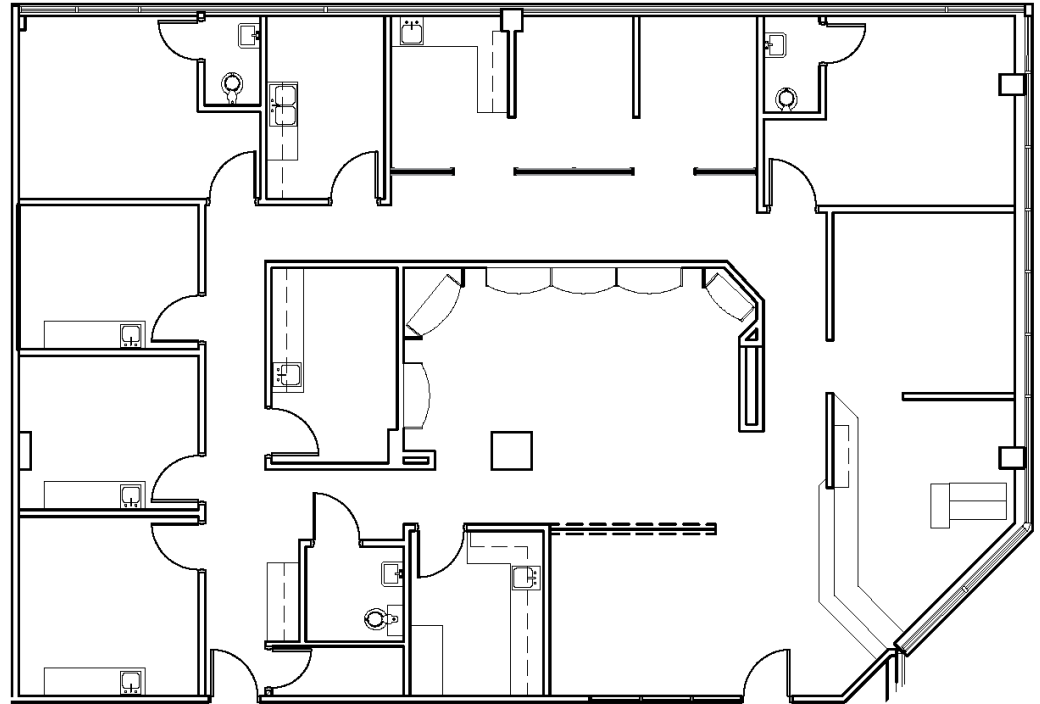
# TRIANGLE MEDICAL CENTER

400 Ashville Avenue | Cary, NC 27518

**AVAILABLE**

Third Floor  
Suite 300

3,351 SF



**BRET MULLER**

919.523.4200

[bmuller@capitalassociates.com](mailto:bmuller@capitalassociates.com)

**WES JOHNSON**

919.422.4853

[wjohnson@capitalassociates.com](mailto:wjohnson@capitalassociates.com)



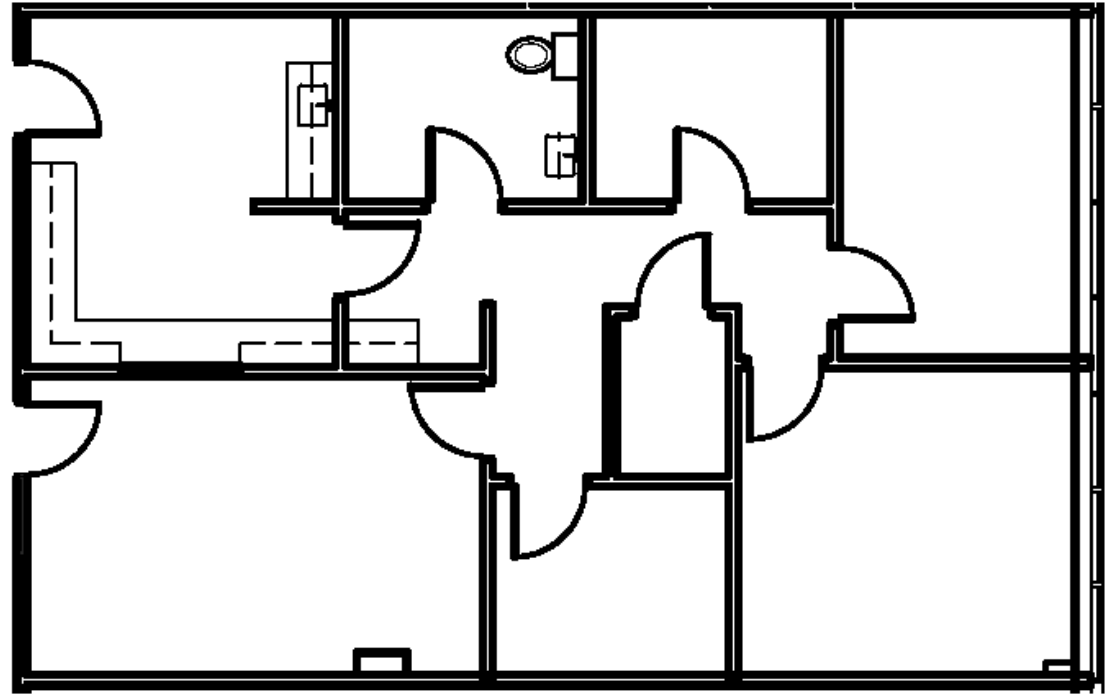
# TRIANGLE MEDICAL CENTER

400 Ashville Avenue | Cary, NC 27518

**AVAILABLE**

Third Floor  
Suite 315

1,421 SF



**BRET MULLER**

919.523.4200

[bmuller@capitalassociates.com](mailto:bmuller@capitalassociates.com)

**WES JOHNSON**

919.422.4853

[wjohnson@capitalassociates.com](mailto:wjohnson@capitalassociates.com)



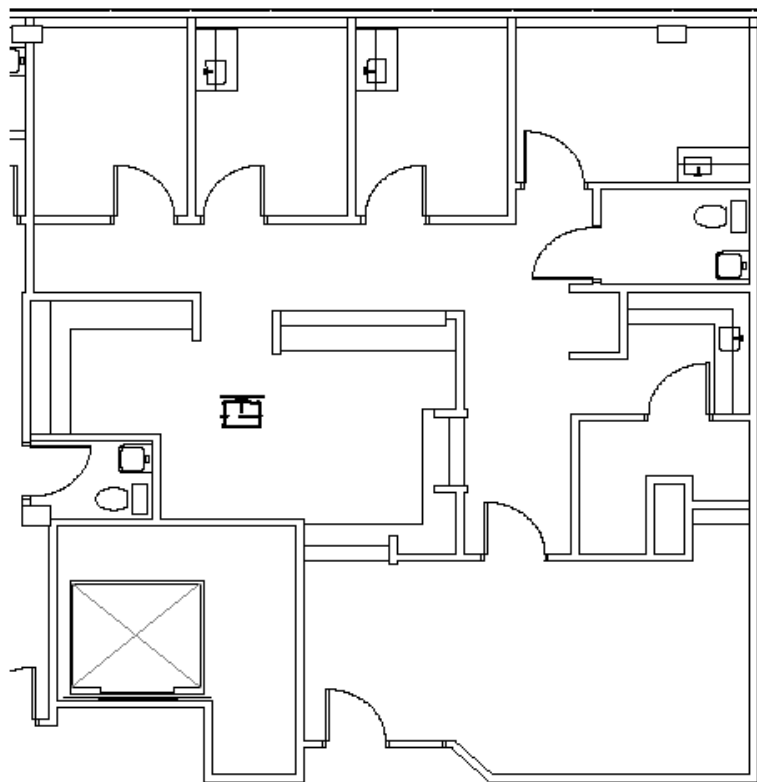
# TRIANGLE MEDICAL CENTER

400 Ashville Avenue | Cary, NC 27518

**AVAILABLE**

Third Floor  
Suite 360

1,595 SF



**BRET MULLER**

919.523.4200

[bmuller@capitalassociates.com](mailto:bmuller@capitalassociates.com)

**WES JOHNSON**

919.422.4853

[wjohnson@capitalassociates.com](mailto:wjohnson@capitalassociates.com)





# TRIANGLE MEDICAL CENTER

400 Ashville Avenue | Cary, NC 27518

## PROPERTY HIGHLIGHTS

Triangle Medical Center is an iconic 30,492 SF three-story office building. Some of its highlights include:

- New flooring
- Ample parking (covered and surface options)
- Recently updated elevator
- Natural light
- Flexible suite options
- Countless surrounding amenities

## LOCATION

The building is located amidst the thriving medical district of Cary. 400 Ashville Ave is less than half a mile from WakeMed Cary Hospital and less than a 5 minute drive to Waverly Place Shopping Center. With plenty of surrounding dining and retail options, the building is a very convenient spot for both patients and employees.

**BRET MULLER**

919.523.4200

[bmuller@capitalassociates.com](mailto:bmuller@capitalassociates.com)

**WES JOHNSON**

919.422.4853

[wjohnson@capitalassociates.com](mailto:wjohnson@capitalassociates.com)

