

FOR LEASE



# CHURCH STREET MEDICAL I

1126 North Church Street | Greensboro, NC 27401



CAPITAL  
ASSOCIATES®

# CHURCH STREET MEDICAL I

1126 N Church St | Greensboro, NC 27401

<b>PROPERTY TYPE</b>	Medical Office
<b>BUILDING SIZE</b>	68,672 SF
<b>SPACE AVAILABLE</b>	3,500 SF
<b>LEASING RATE</b>	\$32.50/SF
<b>LEASE TYPE</b>	Full Service
<b>YEAR BUILT</b>	2003
<b>COUNTY</b>	Guilford
<b>LOCATION</b>	Greensboro, NC
<b>FLOORS</b>	3
<b>PARKING</b>	5.87/1,000 SF

**BRET MULLER**  
919.523.4200  
bmuller@capitalassociates.com

**WES JOHNSON**  
919.422.4853  
wjohnson@capitalassociates.com



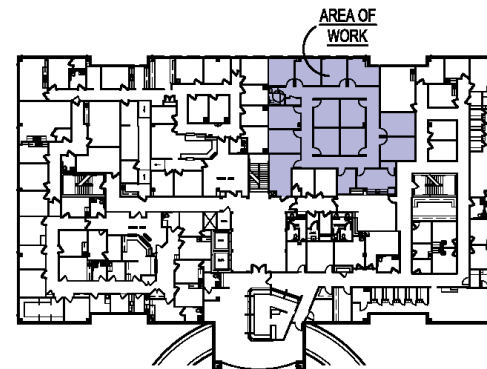
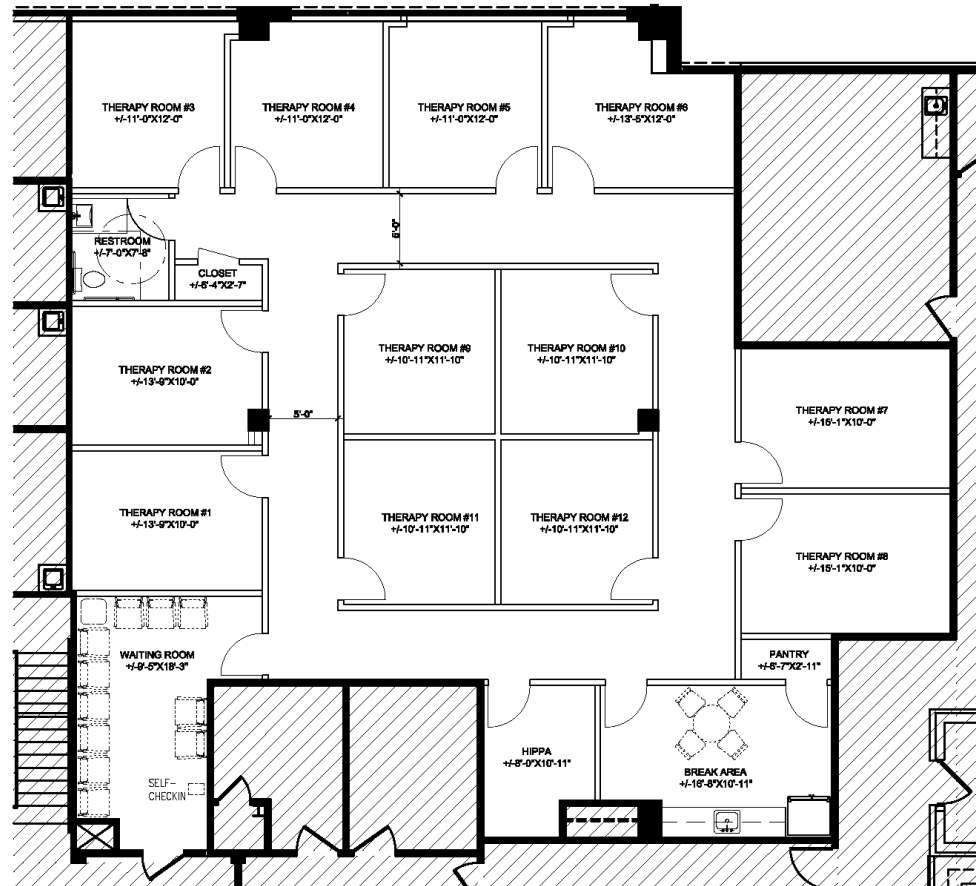
# CHURCH STREET MEDICAL I

1126 N Church St | Greensboro, NC 27401

**AVAILABLE**

Second Floor  
Suite 200B

3,500 SF



**BRET MULLER**

919.523.4200

[bmuller@capitalassociates.com](mailto:bmuller@capitalassociates.com)

**WES JOHNSON**

919.422.4853

[wjohnson@capitalassociates.com](mailto:wjohnson@capitalassociates.com)



# CHURCH STREET MEDICAL I

1126 N Church St | Greensboro, NC 27401

## PROPERTY HIGHLIGHTS

Church Street Medical I is a 68,672 SF, Class A, three-story medical office building. Some of its highlights include:

- Ample parking
- Signage
- Covered drop-off area
- Convenient location
- Energy management system
- Hands free restroom features
- High efficiency HVAC

## LOCATION

The building is convenient for patients and staff, located right across the street from Moses H. Cone Memorial hospital. It is also surrounded by various, banks, hotels, residential neighborhoods, restaurants, and other amenities.

**BRET MULLER**

919.523.4200

[bmuller@capitalassociates.com](mailto:bmuller@capitalassociates.com)

**WES JOHNSON**

919.422.4853

[wjohnson@capitalassociates.com](mailto:wjohnson@capitalassociates.com)

