

FOR LEASE



THE MEDICAL PARK 222

222 Ashville Avenue | Cary, NC 27518



CAPITAL
ASSOCIATES®

THE MEDICAL PARK 222

222 Ashville Avenue | Cary, NC 27518

PROPERTY TYPE	Medical Office
BUILDING SIZE	18,000 SF
LEASING RATE	\$24.00/SF
LEASE TYPE	NNN
ESTIMATED TICAM	\$4.99
YEAR BUILT	1994
COUNTY	Wake
LOCATION	Cary, NC
FLOORS	1
PARKING	Shared surface and deck parking

BRET MULLER
919.523.4200
bmuller@capitalassociates.com

WES JOHNSON
919.422.4853
wjohnson@capitalassociates.com



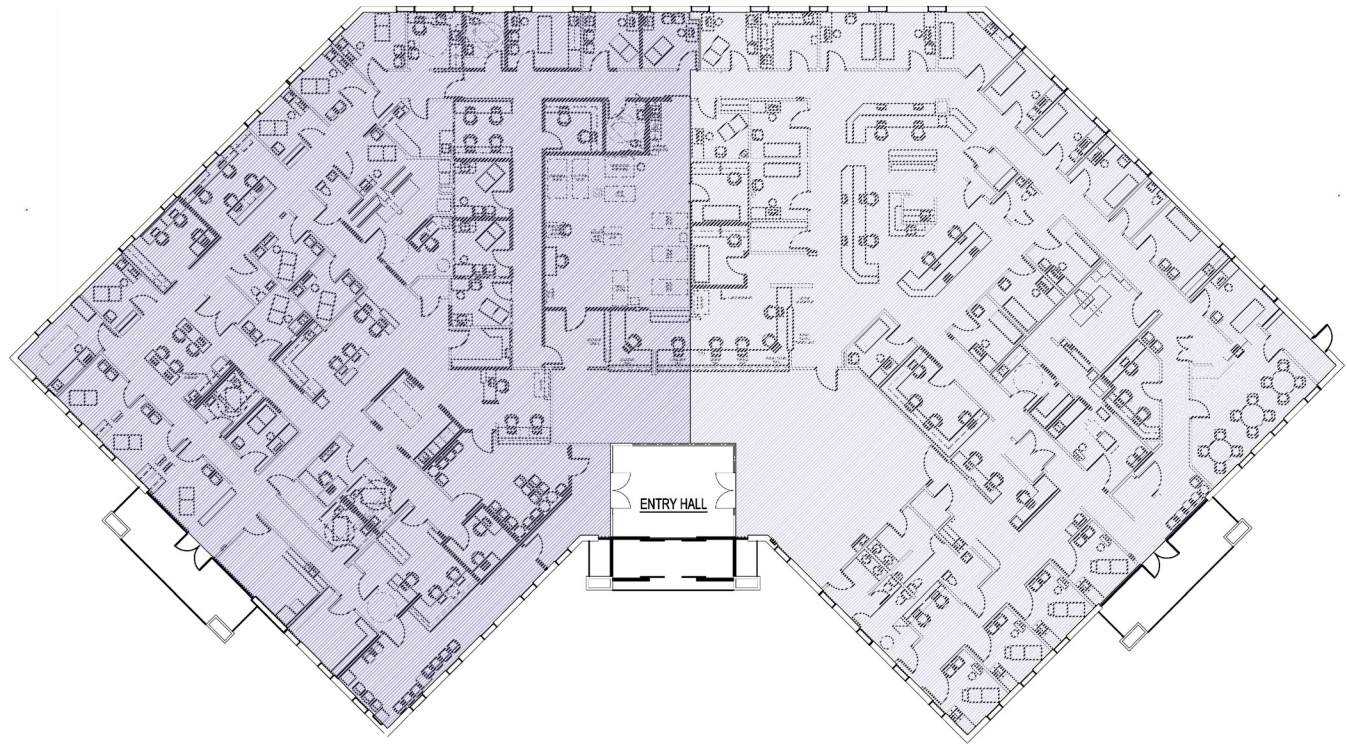
THE MEDICAL PARK 222

222 Ashville Avenue | Cary, NC 27518

AVAILABLE

Entire Building
Suites 10 & 20

18,000 SF



BRET MULLER

919.523.4200

bmuller@capitalassociates.com

WES JOHNSON

919.422.4853

wjohnson@capitalassociates.com



THE MEDICAL PARK 222

222 Ashville Avenue | Cary, NC 27518

PROPERTY HIGHLIGHTS

The Medical Park 222 is a 18,000 SF one-story medical office building located on WakeMed Cary's Hospital Campus with a 3-minute walk to the Hospital.

- On-site, responsive property management and maintenance staff
- Ideally situated near restaurants and lodging
- Easily accessible from I-40, US-64, US-1, and the I-440 Beltline

The Medical Park is home to a diverse mix of renowned medical practitioners and specialists.

BRET MULLER

919.523.4200

bmuller@capitalassociates.com

WES JOHNSON

919.422.4853

wjohnson@capitalassociates.com

